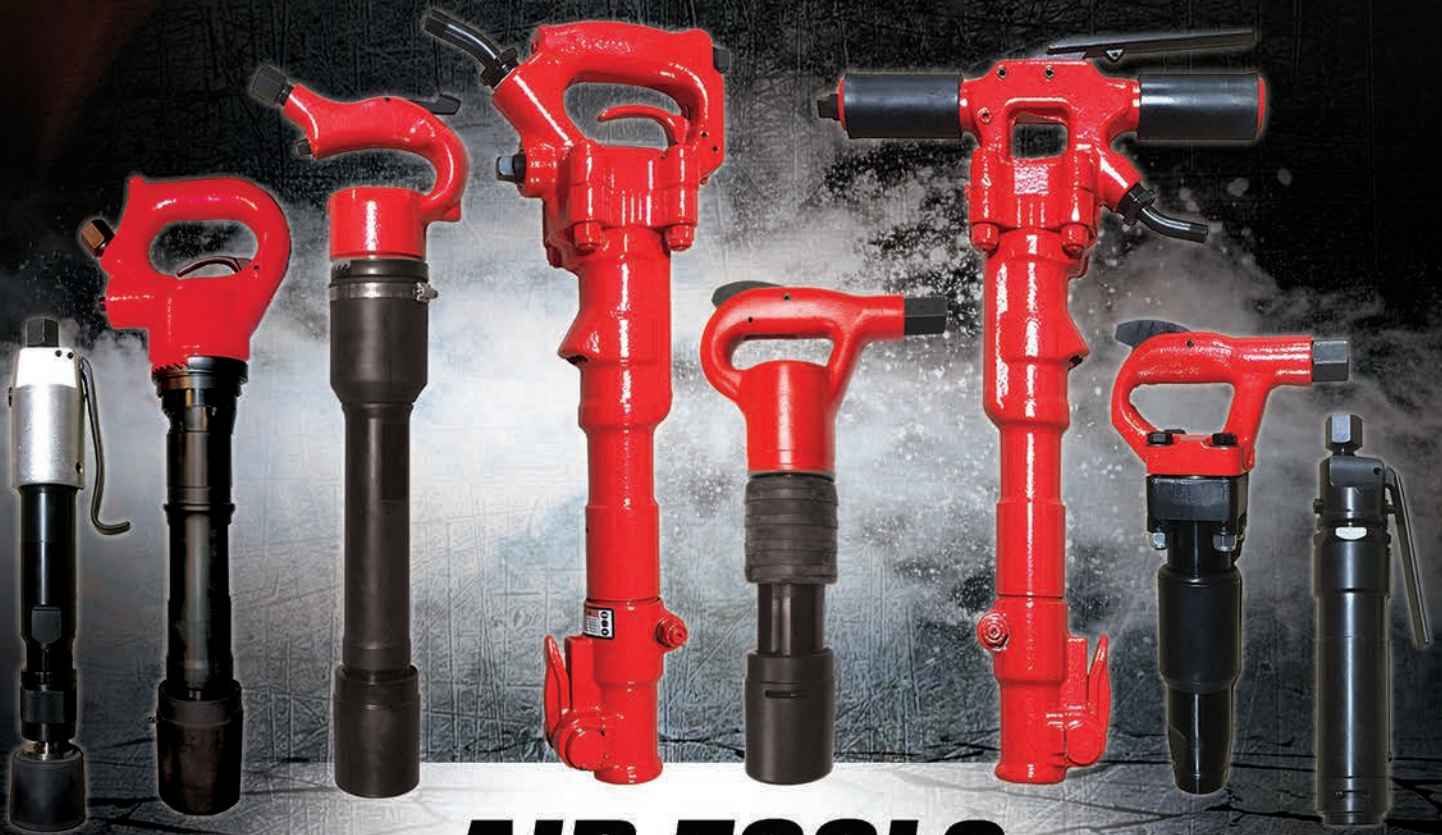


CHAMPION

CHISEL WORKS INC



AIR TOOLS

Visit
CHAMPIONCHISEL.COM

GUIDE

| | |
|--------------------------------|---------|
| CHIPPING HAMMERS | 4 - 9 |
| RIVET BUSTERS | 10 - 15 |
| CLAY DIGGERS | 16 - 17 |
| PAVEMENT BREAKERS | 18 - 23 |
| ROCK DRILLS | 24 - 27 |
| RAMMERS | 28 - 31 |
| SCALERS | 32 - 35 |
| FLOOR SCRAPERS | 36 - 39 |
| TAMPERS | 40 - 41 |
| ACCESSORIES | 42-43 |
| SHANK REFERENCE | 44 |

FREIGHT POLICY

All prices are FOB Shipping Point.

AIR TOOL & STEEL ORDERS:

\$2,500 + (Net Price) Freight Prepaid

RETURNS:

Items returned may be subject to a 25% restocking fee.

Please call for details.

LIMITED WARRANTY

Champion Chisel Works, Inc. tools are warranted against defects in material and workmanship for 180 days from date of purchase. Warranty applies only to new tools purchased through Champion Chisel Works.

Air tools must be operated at 90 PSI to receive coverage of this warranty.

No other warranty is implied or expressed in this catalog.

If an air tool is found to be defective within 180 days of purchase, please contact Champion Chisel Works to receive an RMA number and instructions for returning the tool to Champion Chisel Works for inspection.

Call
1.800.239.1434

Visit
CHAMPIONCHISEL.COM

CHAMPION
CHISEL WORKS INC

SAFETY **TIPS & WARNINGS**



**THE FOLLOWING RECOMMENDATIONS
WILL HELP TO PROLONG THE LIFE OF THE TOOL
AND ALSO CONTRIBUTE TO PERSONAL
SAFETY & BETTER PERFORMANCE.**



AIR TOOL MAINTENANCE & REPAIR

*Champion Chisel Works has an experienced
Service Department for the repair and maintenance
of air tools.*

Please call for complete details.

*Estimated repair costs
will be provided upon request.*

- *When using any tool, safety glasses, safety shoes, safety helmet, safety gloves and ear plugs should be worn for full protection.*
- *Always have a sure footing to give hammer proper support while operating and don't take chances.*
- *To prevent damage to both tool and accessory, accessory must be held firmly against the work surface before tool is throttled.*
- *Never use air tools for prying during use. If tool is being used properly, this action is not necessary.*
- *Never use dull tools as they will accomplish very little and could break from fatigue.*
- *Proper reconditioning procedures should be followed to prevent premature breakage.*
- *Hammer parts should always be kept in good repair. Worn bushings and pistons cause excessive shank wear on tools.*
- *Warm tools prior to use when temperature is below freezing.*
- *Whip hose assemblies can cause serious injury. Always check for damaged or loose hoses and fittings.*
- *Always disconnect the air supply before changing chisels or dismantling the tool for service or repair.*
- *For maximum safety we advise the installation of a shut-off valve at the end of the air line.*

CHIPPING **HAMMERS**

10^{LB} CLASS 4-BOLT
MINI CHIPPING HAMMER

MODEL AT-CHMNH
[.580" Hex Shank]

MODEL AT-CHMNR
[.680" Round Shank]

2" STROKE



| | |
|------------------------------------|-------------------|
| Blows Per Minute | 2750 |
| Stroke | 2.6" |
| Bore | 1.1" |
| Shank Diameter | .580" H / .680" R |
| Length | 12-1/2" |
| Weight | 9.4 lbs |
| Air Inlet Bushing | 7/8" -24 |
| Avg. Air Consumption (90psi) | 17 cfm |
| Recommended Oil Weight | SAE 10W 20 |

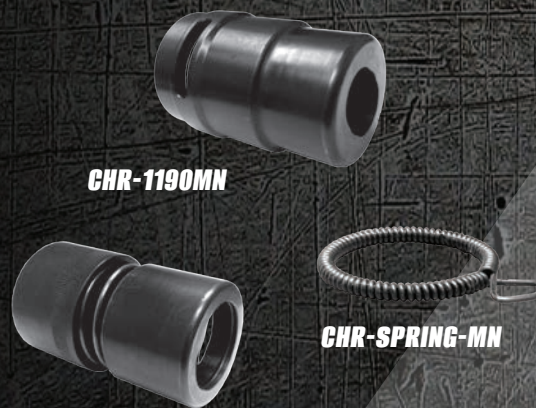
ACCESSORIES

| Part No. | Description |
|-----------------|--|
| CHR-1190MN | Solid/Oval Retainer |
| CHR-1190RMN | Solid/Round Retainer |
| CHR-1291MN | Quick Change Retainer |
| CHR-SPRING-MN | Lock Spring |
| CHR-SPRING-MNPL | Lock Spring - Plastic |
| HS-782412 | 7/8" -24 x 1/2" Hose Barb |
| HS-3812 | 3/8" x 1/2" Hose Barb (Optional) |
| 10-CH1J-014 | 7/8" to 3/8" Reducer (Optional) |
| WHA-6CH | 6' Whip Hose with HS-782412 Swivel, Coupling and ILO-S In-Line Oiler |

Additional Accessories Available - See Page 38

AIR HOSE SOLD SEPARATELY

To order a chipping hammer with a retainer and lock spring attached, please add the corresponding suffix shown below to the model number of the tool.

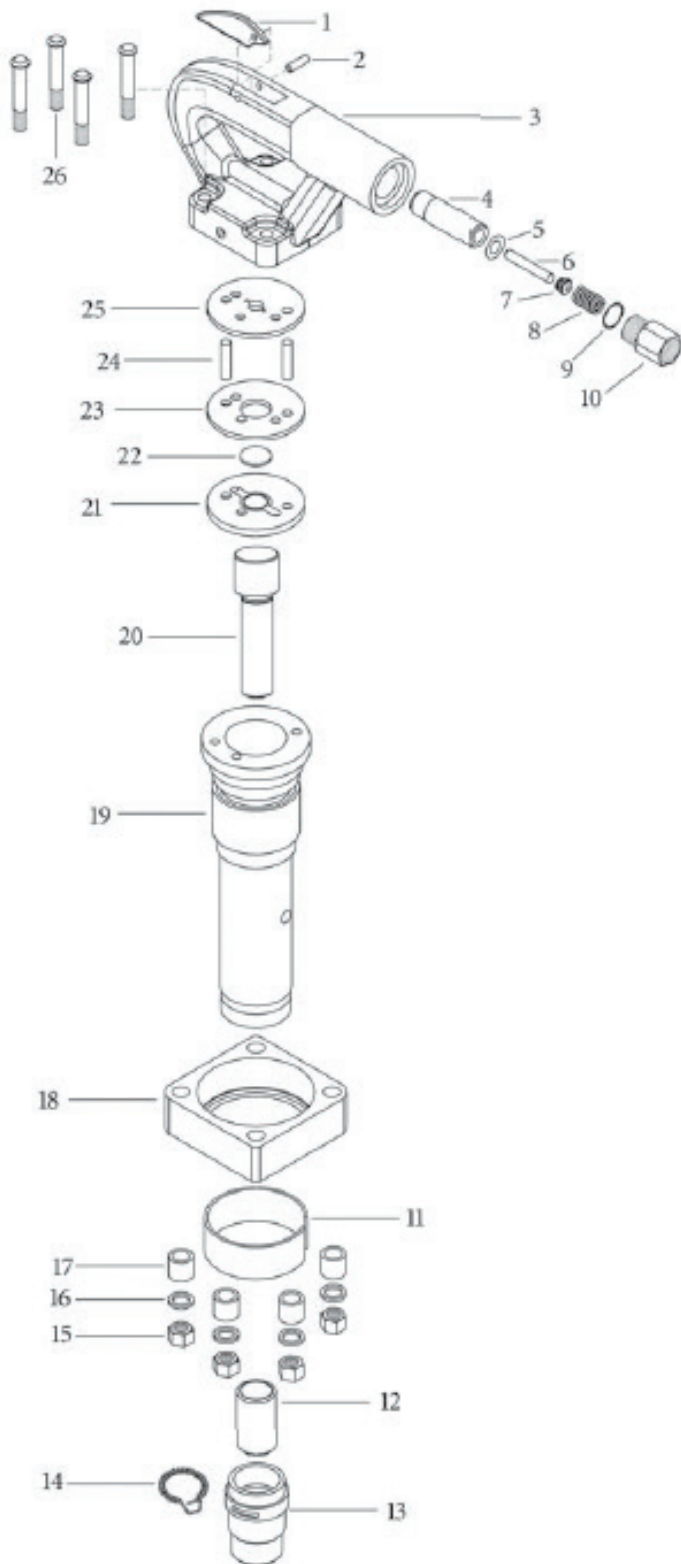


| Suffix | Description |
|---------------|-------------------------------------|
| -O | Oval Retainer & Lock Spring |
| -R | Round Retainer & Lock Spring |
| -QC | Quick Change Retainer & Lock Spring |

CHR-1190RMN

CHR-1190MN

CHR-SPRING-MN



10_{LB} CLASS 4-BOLT MINI CHIPPING HAMMER

| INDEX | PART NUMBER | DESCRIPTION |
|-------|---------------|---------------------------|
| 1 | 10-CH5P-002 | TRIGGER |
| 2 | 10-CH5P-003 | ROLL PIN FOR TRIGGER |
| 3 | 10-CH5P-030 | HANDLE COMPLETE |
| 4 | 10-CH5P-004 | SLEEVE THROTTLE VALVE PIN |
| 5 | 10-CH5P-005 | THROTTLE VALVE O-RING |
| * | 10-CH5P-006 | THROTTLE VALVE ASSEMBLY |
| 6 | 10-CH5P-006A | THROTTLE VALVE PIN |
| 7 | 10-CH5P-006B | SEAT THROTTLE VALVE |
| 8 | 10-CH5P-007 | THROTTLE VALVE SPRING |
| 9 | 10-CH5P-009B | O-RING AL BUSHING |
| 10 | 10-CH5P-008 | AIR INLET NIPPLE W/SCREEN |
| 11 | 10-CH5P-020 | EXHAUST DEFLECTOR |
| 12 | 10-CH5P-022 | HEX BUSHING |
| * | 10-CH5P-023 | ROUND BUSHING |
| 13 | CHR-1190MN | SOLID OVAL RETAINER |
| * | CHR-1190RMN | SOLID ROUND RETAINER |
| * | CHR-1291MN | QUICK CHANGE RETAINER |
| 14 | CHR-SPRING-MN | LOCK SPRING |
| 15 | 10-CH5P-028 | NYLOC NUT |
| 16 | 10-CH5P-029 | WASHER |
| 17 | 10-CH5P-021 | SPACER VIBRATION |
| 18 | 10-CH5P-019 | BARREL FLANGE |
| 19 | 10-CH5P-017 | BARREL |
| 20 | 10-CH5P-016 | PISTON |
| 21 | 10-CH5P-014 | VALVE LID LOWER |
| 22 | 10-CH5P-013 | VALVE |
| 23 | 10-CH5P-012 | VALVE CASE |
| 24 | 10-CH5P-015 | DOWEL PIN |
| 25 | 10-CH5P-011 | VALVE LID UPPER |
| 26 | 10-CH5P-027 | BUTTON HEAD CAP SCREW |

*Not shown in parts diagram.

CHIPPING HAMMERS

12_{LB} - 15_{LB} CLASS 4-BOLT CHIPPING HAMMERS

MODEL AT-CH2H

[.580" Hex Shank]

MODEL AT-CH2R

[.680" Round Shank]

2" STROKE

| | |
|-------------------------------------|--------------|
| Blows Per Minute | 2300 |
| Stroke | 2" |
| Bore | 1-1/8" |
| Shank Diameter | 580"H/.680"R |
| Length | 14" |
| Weight(Steel) | 16 lbs |
| Air Inlet Bushing | 7/8" |
| Avg. Air Consumption (90 PSI) | 30.5 cfm |
| Recommended Oil Weight | SAE 10W 20 |

MODEL AT-CH3H

[.580" Hex Shank]

MODEL AT-CH3R

[.680" Round Shank]

3" STROKE

| | |
|-------------------------------------|--------------|
| Blows Per Minute | 2200 |
| Stroke | 3" |
| Bore | 1-1/8" |
| Shank Diameter | 580"H/.680"R |
| Length | 15.25" |
| Weight | 17 lbs |
| Air Inlet Bushing | 7/8" |
| Avg. Air Consumption (90 PSI) | 32 cfm |
| Recommended Oil Weight | SAE 10W 20 |

MODEL AT-CH4H

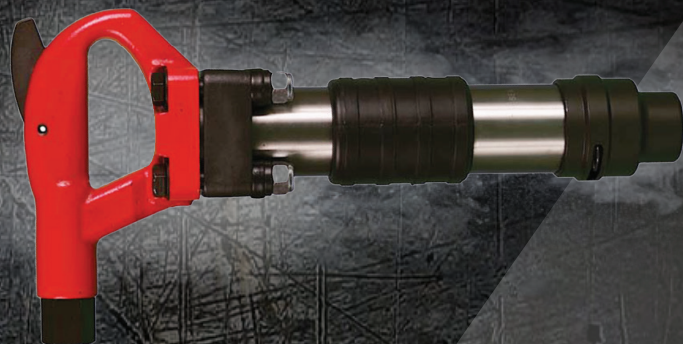
[.580" Hex Shank]

MODEL AT-CH4R

[.680" Round Shank]

4" STROKE

| | |
|-------------------------------------|--------------|
| Blows Per Minute | 1800 |
| Stroke | 4" |
| Bore | 1-1/8" |
| Shank Diameter | 580"H/.680"R |
| Length | 17" |
| Weight | 18 lbs |
| Air Inlet Bushing | 7/8" |
| Avg. Air Consumption (90 PSI) | 35 cfm |
| Recommended Oil Weight | SAE 10W 20 |



ACCESSORIES

Part No.

CHR-1190SUL

CHR-1291SUL

CHR-SPRING

HS-782412

WHA-6CH

Description

Solid/Taper/Oval

Quick Change/Taper

Lock Spring

7/8" -24 UNC x 1/2" Hose Barb

6' Whip Hose Assembly with

HS-782412 Swivel, Coupling

and ILO-S In-Line Oiler.

Additional Accessories Available - See Page 40

To order a chipping hammer with a retainer and lock spring attached, please add the corresponding suffix shown below to the model number of the tool.

Suffix | Description

-O | Oval Retainer & Lock Spring

-R | Round Retainer & Lock Spring

-QC | Quick Change Retainer & Lock Spring



CHR-1191SUL



CHR-1190SUL



CHR-SPRING

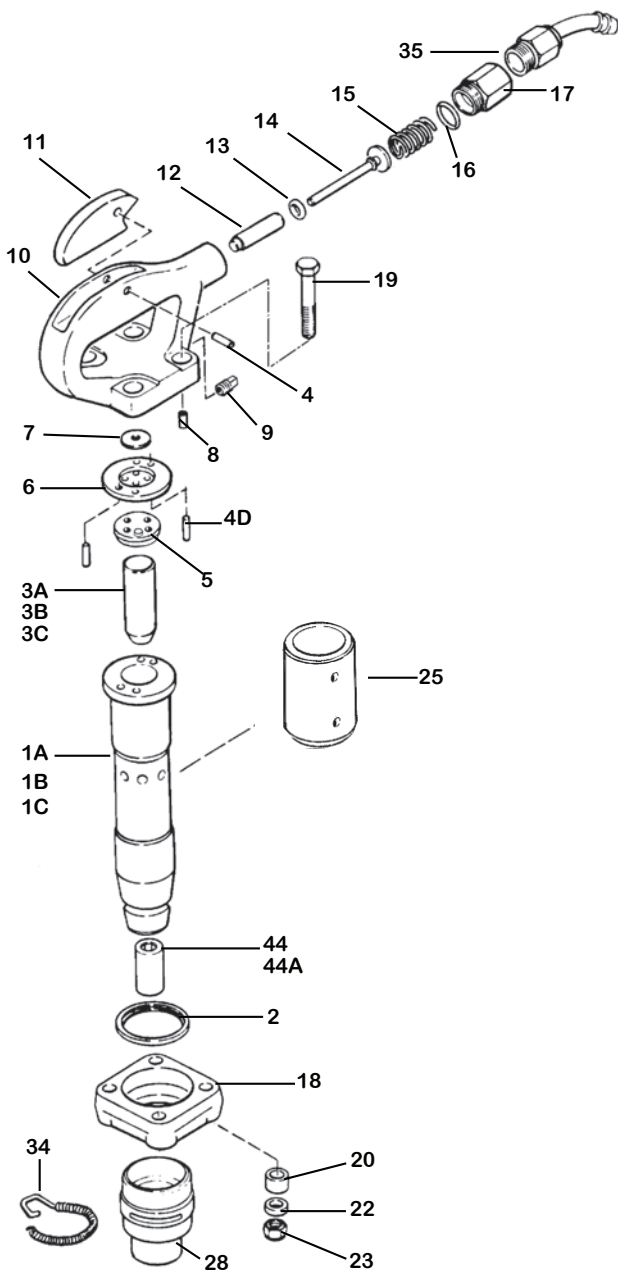


HS-782412



WHA-6CH

12LB - 15LB CLASS 4-BOLT CHIPPING HAMMERS



| INDEX | PART | DESCRIPTION |
|-------|-------------|---------------------------|
| 1A | 10-CH1B-001 | 2" BARREL |
| 1B | 10-CH1C-001 | 3" BARREL |
| 1C | 10-CH1D-001 | 4" BARREL |
| 2 | 250027-493 | FLANGE BUMPER RING |
| 3A | 10-CH1K-004 | 2" PISTON |
| 3B | 10-CH1K-005 | 3" PISTON |
| 3C | 10-CH1K-006 | 4" PISTON |
| 4 | ATP0481 | PIN |
| 4D | 250027-481 | VALVE DOWEL PIN (2) |
| 5 | 250027-480 | BUMPER VALVE SEAT |
| 6 | 250027-482 | VALVE SPACER |
| 7 | 250027-483 | VALVE PLATE |
| 8 | 10-CH1H-004 | AIR PLUG |
| 9 | 10-CH1C-003 | AIR PLUG |
| 10 | 250027-484 | HANDLE BARE |
| * | 10-CH1H-005 | HANDLE COMPLETE |
| 11 | 10-CH1N-001 | TRIGGER (LEVER) |
| 12 | 250027-487 | THROTTLE VALVE BUSHING |
| 13 | 10-CH1H-008 | THROTTLE VALVE O-RING |
| 14 | 10-CH1H-006 | THROTTLE VALVE |
| 15 | 250027-489 | THROTTLE VALVE SPRING |
| 16 | 250027-490 | AIR INLET BUSHING O-RING |
| 17 | 10-CH1H-001 | AIR INLET (7/8X24 SWIVEL) |
| 18 | 250027-494 | FLANGE |
| 19 | 250027-485 | HANDLE BOLT |
| * | 10-CH1H-002 | SPRING WASHER |
| 20 | 250027-495 | BUMPER WASHER |
| 22 | 250027-496 | HANDLE BOLT SPACER |
| 23 | 250027-497 | HANDLE BOLT NUT |
| 25 | 10-CH1K-001 | EXHAUST DEFLECTOR |
| 28 | CHR-1190SUL | RETAINER OVAL COLLAR |
| 34 | CHR-SPRING | RETAINER SPRING |
| 35 | HS-782412 | AIR INLET SWIVEL |
| 44 | 10-CH1K-003 | BUSHING ROUND SHANK |
| 44A | 10-CH1K-002 | BUSHING HEX SHANK |

*Not shown in parts diagram.

CHIPPING **HAMMERS**

MODEL **AT-MP-2200H**

[.580" Hex Shank]

MODEL **AT-MP-2200R**

[.680" Round Shank]

2" STROKE

| | |
|-------------------------------------|------------|
| Blows Per Minute | 1900 |
| Stroke | 2" |
| Bore | 1-1/8" |
| Length | 13-1/4" |
| Weight | 15.2 lbs |
| Air Inlet Thread | 3/8" |
| Avg. Air Consumption (90 PSI) | 22 cfm |
| Recommended Oil Weight | SAE 10W 20 |

MODEL **AT-MP-3300H**

[.580" Hex Shank]

MODEL **AT-MP-3300R**

[.680" Round Shank]

3" STROKE

| | |
|-------------------------------------|------------|
| Blows Per Minute | 1700 |
| Stroke | 3" |
| Bore | 1-1/8" |
| Length | 15-1/4" |
| Weight | 16 lbs |
| Air Inlet Thread | 3/8" |
| Avg. Air Consumption (90 PSI) | 23 cfm |
| Recommended Oil Weight | SAE 10W 20 |

MODEL **AT-MP-4400H**

[.580" Hex Shank]

MODEL **AT-MP-4400R**

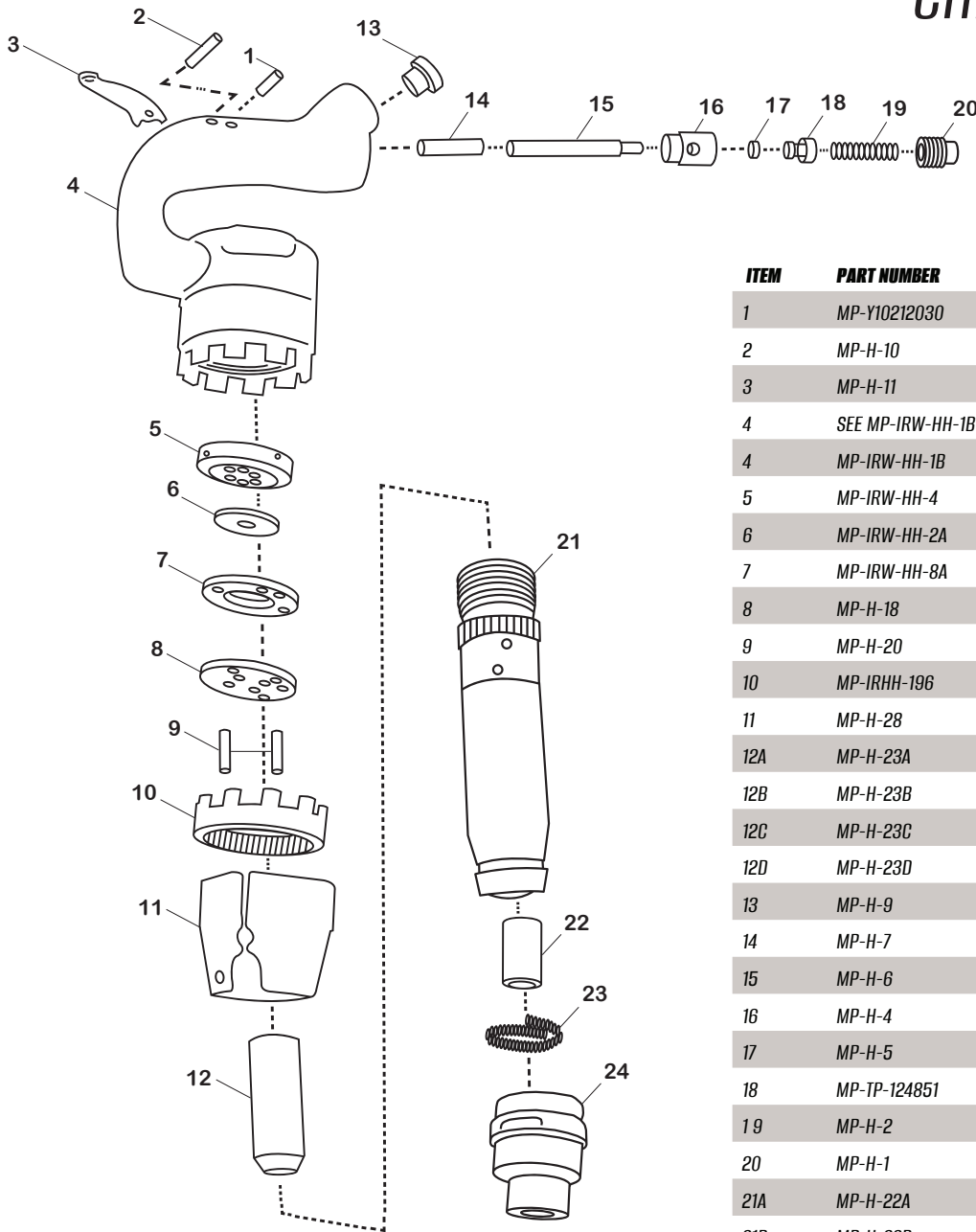
[.680" Round Shank]

4" STROKE

| | |
|-------------------------------------|------------|
| Blows Per Minute | 1400 |
| Stroke | 4" |
| Bore | 1-1/8" |
| Length | 16-1/2" |
| Weight | 18 lbs |
| Air Inlet Thread | 3/8" |
| Avg. Air Consumption (90 PSI) | 24 cfm |
| Recommended Oil Weight | SAE 10W 20 |



CHIPPING HAMMERS



| ITEM | PART NUMBER | DESCRIPTION |
|------|------------------|-----------------------------|
| 1 | MP-Y10212030 | STOP PIN |
| 2 | MP-H-10 | PIN SLEEVE |
| 3 | MP-H-11 | THROTTLE LEVER |
| 4 | SEE MP-IRW-HH-1B | HANDLE BARE |
| 4 | MP-IRW-HH-1B | HANDLE COMPLETE |
| 5 | MP-IRW-HH-4 | UPPER VALVE CASE LID |
| 6 | MP-IRW-HH-2A | VALVE |
| 7 | MP-IRW-HH-8A | VALVE CASE |
| 8 | MP-H-18 | LOWER VALVE CASE LID |
| 9 | MP-H-20 | DOWEL PI* (2) |
| 10 | MP-IRHH-196 | LOCK |
| 11 | MP-H-28 | LOCK SHIELD |
| 12A | MP-H-23A | CYLINDER FOR MP-1100 |
| 12B | MP-H-23B | CYLINDER FOR MP-2200 |
| 12C | MP-H-23C | CYLINDER FOR MP-3300 |
| 12D | MP-H-23D | CYLINDER FOR MP-4400 |
| 13 | MP-H-9 | PERMANENT BUSHING |
| 14 | MP-H-7 | PUSH PIN BUSHING |
| 15 | MP-H-6 | PUSH PIN |
| 16 | MP-H-4 | THROTTLE VALVE BUSHING |
| 17 | MP-H-5 | THROTTLE VALVE O-RING ONLY |
| 18 | MP-TP-124851 | THROTTLE VALVE WITH O-RING |
| 19 | MP-H-2 | THROTTLE VALVE SPRING |
| 20 | MP-H-1 | THROTTLE VALVE PLUG |
| 21A | MP-H-22A | PISTON FOR MP-1100 |
| 21B | MP-H-22B | PISTON FOR MP-2200 |
| 21C | CHP-3 | PISTON FOR MP-3300 |
| 21D | MP-H-22D | PISTON FOR MP-4400 |
| 22A | MP-H-35A | .680 ROUND CYLINDER BUSHING |
| 22B | MP-H-35B | .580 HEX CYLINDER BUSHING |
| 23 | CHR-SPRING | RETAINER LOCK SPRING |
| 24 | CHR-1190SUL | OVAL COLLAR RETAINER |

RIVET BUSTERS

20LB CLASS
CLOSED HANDLE

MODEL **AT-RBA05**

5" STROKE

| | |
|------------------------------------|------------|
| Blows Per Minute | 1560 |
| Stroke | 5" |
| Bore | 1.418" |
| Length | 17" |
| Weight | 23 lbs |
| Air Inlet Bushing | 7/8" |
| Avg. Air Consumption (90psi) | 40 cfm |
| Recommended Oil Weight | SAE 10W 20 |



ACCESSORIES

| Part No. | Description |
|-----------------|-----------------------|
| RBP-RB2104 | Rubber Bumper |
| RBP-UB2102 | Urethane Bumper |
| RBP-US2101 | Upper Sleeve |
| RBP-LS2103 | Lower Sleeve |
| RBP-LS2103S | Split Lower Sleeve |
| RBP-RS2194 | Retainer Spring |
| RBR-6085 | Retainer |
| HS-1212 | 1/2" x 1/2" Hose Barb |

Additional Accessories Available - See Page 42



RBP-US2101



RBP-LS2103



RBP-LS2103S



RBP-RB2104



HS-1212

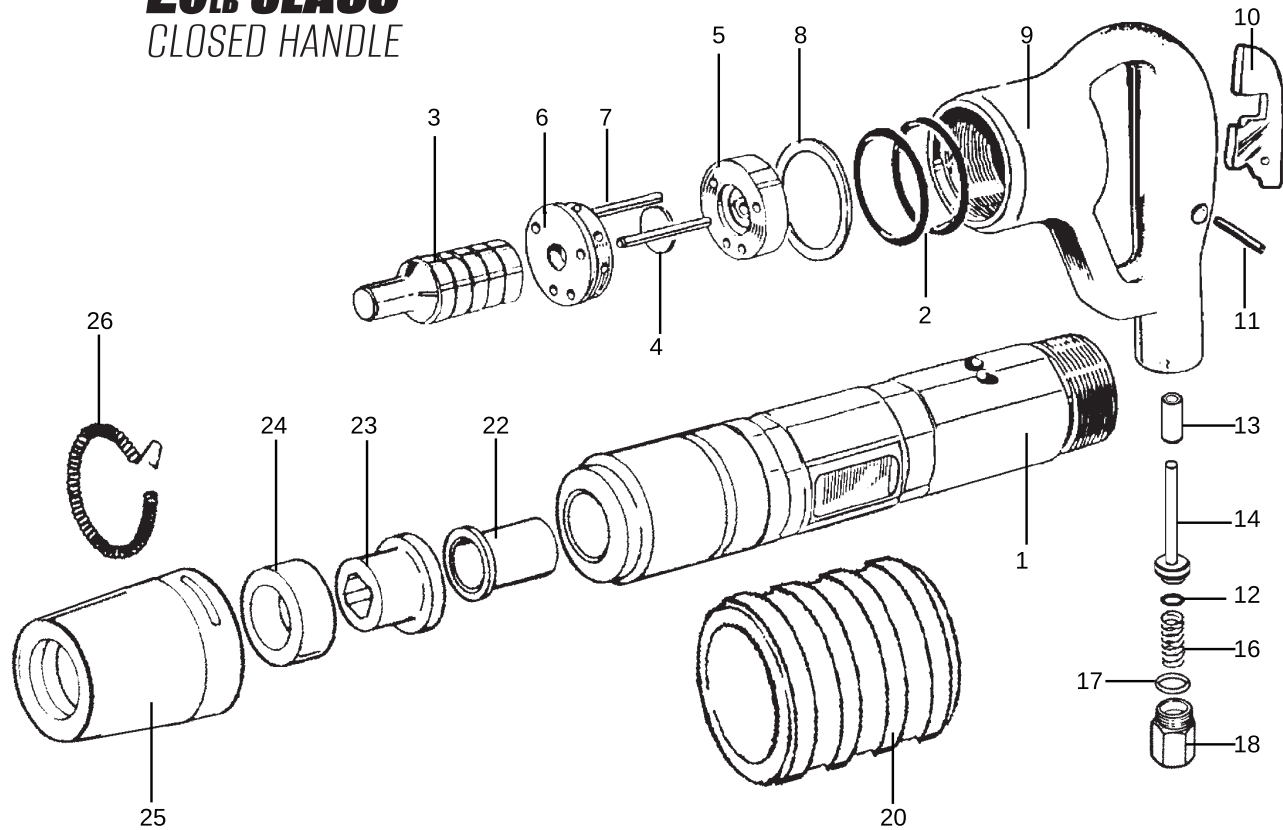


RBP-RS2194



RBR-6085

20_{LB} CLASS
CLOSED HANDLE



| INDEX | PART NUMBER | DESCRIPTION |
|-------|---------------|------------------------|
| 1 | 10-RB1P-001 | CYLINDER |
| 2 | 10-RB1P-002 | CYLINDER "O" RING (2) |
| 3 | 10-RB1P-003 | PISTON |
| 4 | 10-RB1P-004 | VALVE DISC |
| 5 | 10-RB1P-005 | VALVE PLATE UPPER |
| 6 | 10-RB1P-006 | VALVE PLATE LOWER |
| 7 | 10-RB1P-007 | DOWEL PIN (2) |
| 8 | 10-RB1P-008 | PACKING RING (2) |
| 9 | 10-RB1P-009N | HANDLE BARE |
| * | 10-RB1P-009NC | HANDLE COMPLETE |
| 10 | 10-RB1P-010 | THROTTLE LEVER |
| 11 | 10-RB1P-011 | THROTTLE LEVER PIN |
| 12 | 10-RB1P-012 | PUSH ROD "O" RING |
| 13 | 10-RB1P-021 | THROTTLE VALVE BUSHING |

| INDEX | PART NUMBER | DESCRIPTION |
|-------|-------------|----------------------------|
| 14 | 10-RB1P-014 | THROTTLE VALVE |
| 16 | 10-RB1P-016 | THROTTLE VALVE SPRING |
| 17 | 10-RB1P-017 | AIR INLET "O" RING |
| 18 | 10-RB1P-018 | AIR INLET |
| 20 | 10-RB1P-020 | MUFFLER |
| 22 | RBP-US2101 | UPPER SLEEVE BUSHING |
| 23 | RBP-LS2103 | LOWER SLEEVE BUSHING |
| 24 | RBP-UB2102 | RETAINER BUMPER (URETHANE) |
| 25 | RBR-6085 | RETAINER |
| 26 | RBP-RS2194 | RETAINER SPRING |
| * | HS-1212 | SWIVEL |

*Not shown in parts diagram.

RIVET BUSTERS

30_{LB} - 40_{LB} CLASS
CLOSED HANDLE

MODEL **AT-RBA06B**

6" STROKE

| | |
|------------------------------------|------------|
| Blows Per Minute | 1200 |
| Stroke | 6" |
| Bore | 1-3/16" |
| Length | 20.5" |
| Weight | 26 lbs |
| Air Inlet Bushing | 1/2" |
| Avg. Air Consumption (90psi) | 44 cfm |
| Recommended Oil Weight | SAE 10W 20 |

MODEL **AT-RBA08**

8" STROKE

| | |
|------------------------------------|------------|
| Blows Per Minute | 1140 |
| Stroke | 8" |
| Bore | 1-3/16" |
| Length | 22.5" |
| Weight | 30 lbs |
| Air Inlet Bushing | 1/2" |
| Avg. Air Consumption (90psi) | 44 cfm |
| Recommended Oil Weight | SAE 10W 20 |

MODEL **AT-RBA11**

11" STROKE

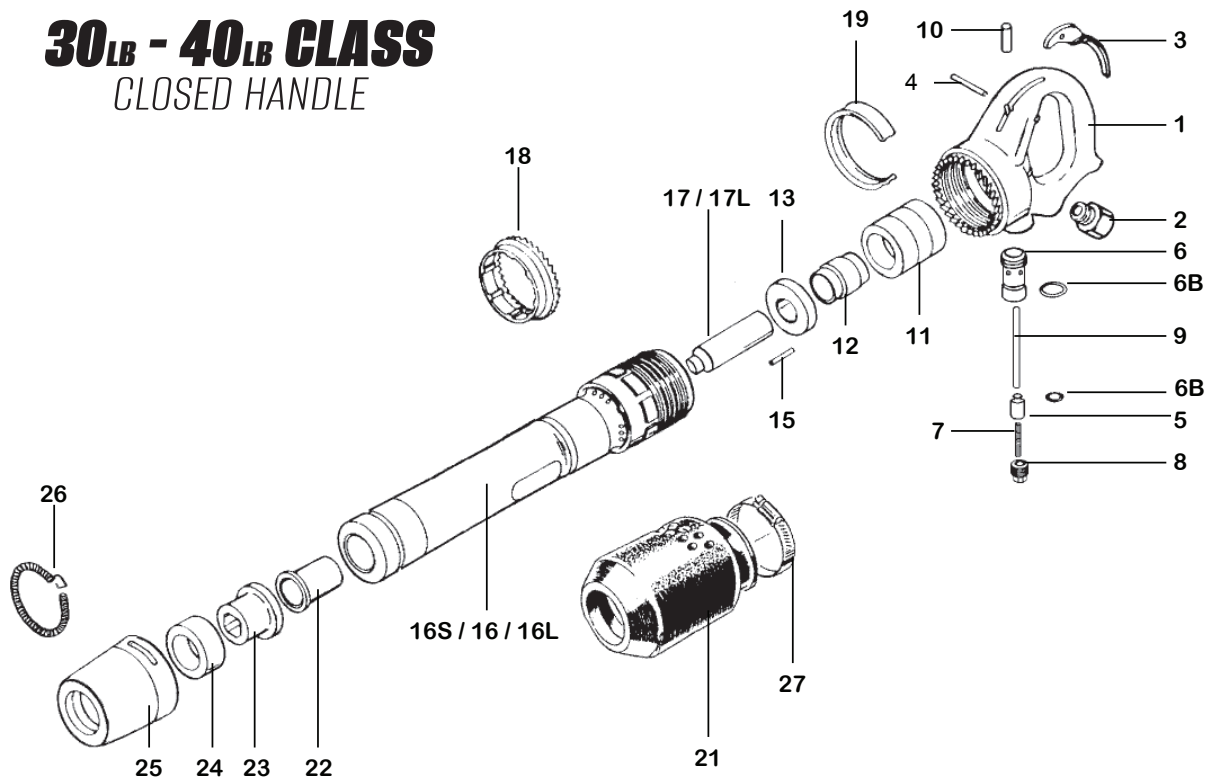
| | |
|------------------------------------|------------|
| Blows Per Minute | 850 |
| Stroke | 11" |
| Bore | 1-3/16" |
| Length | 25.5" |
| Weight | 33 lbs |
| Air Inlet Bushing | 1/2" |
| Avg. Air Consumption (90psi) | 50 cfm |
| Recommended Oil Weight | SAE 10W 20 |



ACCESSORIES

| <u>Part No.</u> | <u>Description</u> |
|-----------------|-----------------------|
| RBP-RB2104 | Rubber Bumper |
| RBP-UB2102 | Urethane Bumper |
| RBP-US2101 | Upper Sleeve |
| RBP-LS2103 | Lower Sleeve |
| RBP-LS2103S | Split Lower Sleeve |
| RBP-RS2194 | Retainer Spring |
| RBR-6085 | Retainer |
| HS-1212 | 1/2" x 1/2" Hose Barb |

30LB - 40LB CLASS CLOSED HANDLE



| ITEM | PART NUMBER | DESCRIPTION |
|------|-------------|---------------------------|
| 1 | 10-RB1G-013 | HANDLE BARE |
| * | 10-RB1G-014 | HANDLE COMPLETE |
| 3 | 10-RB1G-001 | THROTTLE LEVER |
| 4 | 10-RB1G-008 | THROTTLE LEVER PIN |
| 5 | 10-RB1G-007 | THROTTLE VALVE |
| 6 | 10-RB1G-011 | THROTTLE VALVE BUSHING |
| 6A | 10-RB1G-005 | THROTTLE BUSHING "O" RING |
| 6B | 10-RB1J-002 | THROTTLE VALVE "O" RING |
| 7 | 10-PB1A-007 | THROTTLE VALVE SPRING |
| 8 | 10-RB1H-010 | THROTTLE VALVE PLUG |
| 9 | 10-RB1G-006 | PUSH PIN |
| 10 | 10-RB1G-009 | PUSH PIN BUSHING |
| 11 | 10-RB1J-005 | VALVE BOX |
| 12 | 10-RB1J-006 | VALVE |
| 13 | 10-RB1J-009 | VALVE COVER FRONT |
| * | 10-RB1J-010 | VALVE ASSEMBLY |

| ITEM | PART NUMBER | DESCRIPTION |
|------|-------------|---------------------------|
| 15 | 10-RB1J-007 | VALVE DOWEL PIN |
| 16S | 10-RB1K-001 | BARREL 6" |
| 16 | 10-RB1L-002 | BARREL 8" |
| 16L | 10-RB1M-001 | BARREL 11" |
| 17 | 10-RB1N-001 | PISTON 3" |
| 17L | 10-RB1M-002 | PISTON 4" * |
| 18 | 10-RB1J-008 | HANDLE LOCK RING |
| 19 | 10-RB1J-011 | HANDLE LOCK SPRING |
| 20 | 10-RB1J-001 | HANDLE BUSHING |
| 21 | 10-RB1J-013 | MUFFLER |
| 22 | RBP-US2101 | UPPER SLEEVE BUSHING |
| 23 | RBP-LS2103 | LOWER SLEEVE BUSHING |
| 24 | RBP-UB2102 | RETAINER BUMPER (POLY) |
| 25 | RBR-6085 | RETAINER |
| 26 | RBP-RS2194 | RETAINER SPRING |
| 27 | 10-RB1J-012 | MUFFLER CLAMP (STAINLESS) |
| * | HS-1212 | SWIVEL (OPTIONAL) |

*Not shown in parts diagram.

RIVET BUSTERS

MODEL **AT-RBA08-OH**

8" STROKE

| | |
|------------------------------------|------------|
| Blows Per Minute | 1140 |
| Stroke | 8" |
| Bore | 1-3/16" |
| Length | 22.5" |
| Weight | 30 lbs |
| Air Inlet Bushing | 1/2" |
| Avg. Air Consumption (90psi) | 44 cfm |
| Recommended Oil Weight | SAE 10W 20 |

MODEL **AT-RBA11-OH**

11" STROKE

| | |
|------------------------------------|------------|
| Blows Per Minute | 850 |
| Stroke | 11" |
| Bore | 1-3/16" |
| Length | 25.5" |
| Weight | 33 lbs |
| Air Inlet Bushing | 1/2" |
| Avg. Air Consumption (90psi) | 50 cfm |
| Recommended Oil Weight | SAE 10W 20 |

30_{LB} - 40_{LB} CLASS
OPEN HANDLE

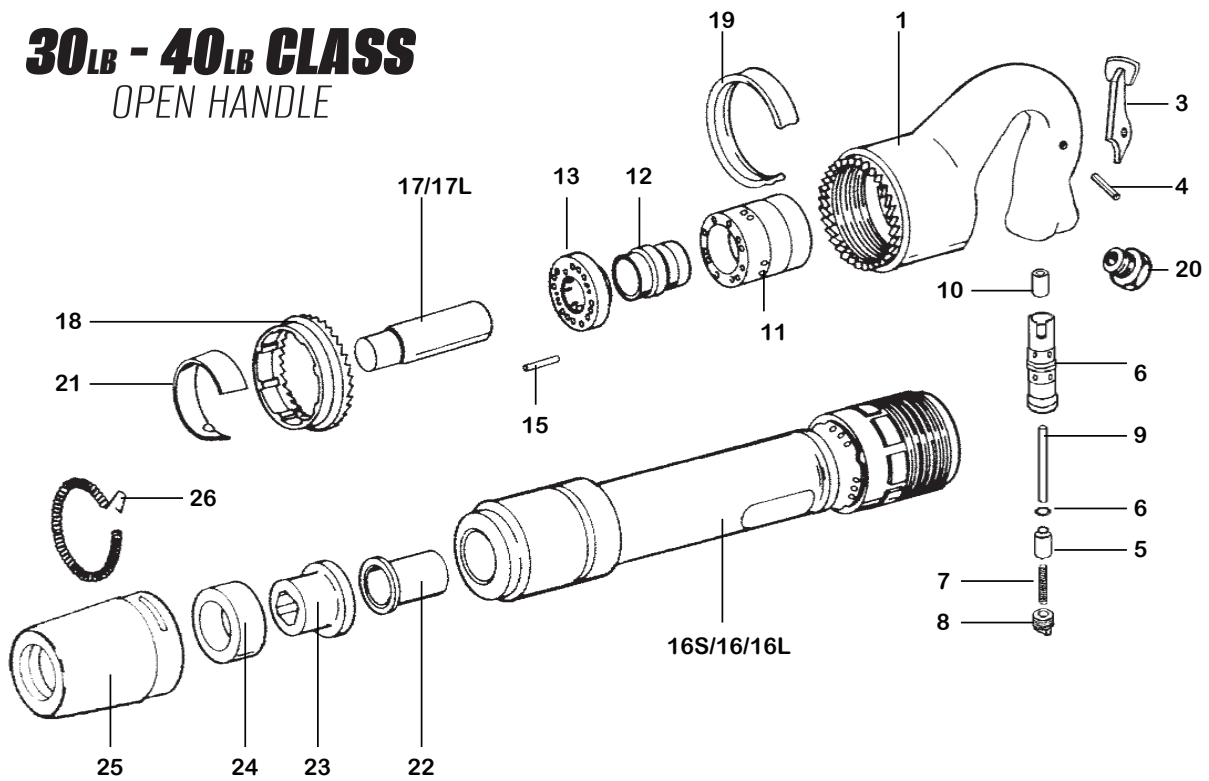


ACCESSORIES

| Part No. | Description |
|-------------|-----------------------|
| RBP-RB2104 | Rubber Bumper |
| RBP-UB2102 | Urethane Bumper |
| RBP-US2101 | Upper Sleeve |
| RBP-LS2103 | Lower Sleeve |
| RBP-LS2103S | Split Lower Sleeve |
| RBP-RS2194 | Retainer Spring |
| RBR-6085 | Retainer |
| HS-1212 | 1/2" x 1/2" Hose Barb |

Additional Accessories Available - See Page 42

30LB - 40LB CLASS OPEN HANDLE



| ITEM | PART NUMBER | DESCRIPTION |
|------|-------------|-------------------------|
| 1 | 10-RB1H-008 | HANDLE BARE |
| * | 10-RB1H-009 | HANDLE COMPLETE |
| 3 | 10-RB1H-001 | THROTTLE LEVER |
| 4 | 10-RB1H-002 | THROTTLE LEVER PIN |
| 5 | 10-RB1H-005 | THROTTLE VALVE |
| 6 | 10-RB1H-003 | THROTTLE VALVE BUSH. |
| 6B | 10-RB1J-002 | THROTTLE VALVE "O" RING |
| 7 | 10-PB1A-007 | THROTTLE VALVE SPRING |
| 8 | 10-RB1H-010 | THROTTLE VALVE PLUG |
| 9 | 10-RB1H-004 | PUSH PIN |
| 10 | 10-RB1H-007 | PUSH PIN BUSHING |
| 11 | 10-RB1J-005 | VALVE BOX |
| 12 | 10-RB1J-006 | VALVE |
| 13 | 10-RB1J-009 | VALVE COVER FRONT |
| * | 10-RB1J-010 | VALVE ASSEMBLY |
| 15 | 10-RB1J-007 | VALVE DOWEL PIN |
| 16S | 10-RB1K-001 | BARREL 6" |
| 16 | 10-RB1L-002 | BARREL 8" |

| ITEM | PART NUMBER | DESCRIPTION |
|------|-------------|----------------------------|
| 16L | 10-RB1M-001 | BARREL 11" |
| 17 | 10-RB1N-001 | PISTON 3" |
| 17L | 10-RB1M-002 | PISTON 4" * |
| 18 | 10-RB1J-008 | HANDLE LOCK RING |
| 19 | 10-RB1J-011 | HANDLE LOCK SPRING |
| 20 | 10-RB1J-001 | HANDLE BUSHING |
| * | 10-RB1J-013 | MUFFLER |
| 21 | 10-RB1J-001 | EXHAUST DEFLECTOR |
| 22 | RBP-US2101 | UPPER SLEEVE BUSHING |
| 23 | RBP-LS2103 | LOWER SLEEVE BUSHING |
| 24 | RBP-UB2102 | RETAINER BUMPER (URETHANE) |
| 25 | RBR-6085 | RETAINER |
| 26 | RBP-RS2194 | RETAINER SPRING |
| * | 10-RB1J-012 | MUFFLER CLAMP (STAINLESS) |
| * | HS-1212 | SWIVEL (OPTIONAL) |

*Not shown in parts diagram.

CLAY DIGGERS

MODEL AT-CD30-78

7/8" x 3-1/4"

| | |
|-------------------------------------|------------|
| Blows Per Minute | 1550 |
| Stroke | 3.375" |
| Bore | 1-3/4" |
| Length | 23" |
| Weight | 30 lbs |
| Air Inlet Thread | 3/8" |
| Avg. Air Consumption (90 PSI) | 49 cfm |
| Recommended Oil Weight | SAE 10W 20 |

MODEL AT-CD30-1

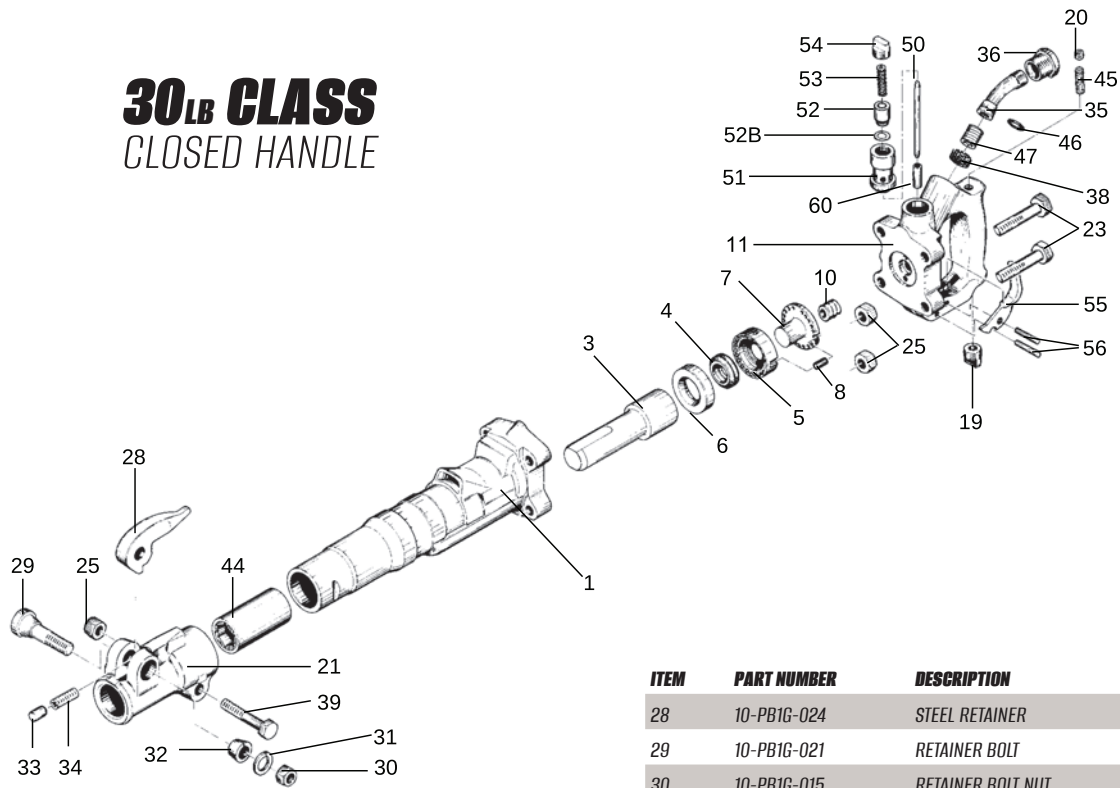
1" x 4-1/4"

| | |
|-------------------------------------|------------|
| Blows Per Minute | 1550 |
| Stroke | 3.375" |
| Bore | 1-3/4" |
| Length | 23" |
| Weight | 30 lbs |
| Air Inlet Thread | 3/8" |
| Avg. Air Consumption (90 PSI) | 49 cfm |
| Recommended Oil Weight | SAE 10W 20 |

30 LB CLASS
CLOSED HANDLE



30LB CLASS CLOSED HANDLE



| ITEM | PART NUMBER | DESCRIPTION |
|------|-------------|--------------------|
| 1 | 10-PB1G-012 | CYLINDER |
| 3 | 10-PB1G-010 | PISTON |
| 4 | 10-PB1G-026 | AUTOMATIC VALVE |
| 5 | 10-PB1G-008 | VALVE CHEST |
| 6 | 10-PB1G-009 | VALVE SEAT |
| 7 | 10-PB1G-027 | VALVE GUIDE |
| 8 | 10-PB1G-007 | VALVE DOWEL |
| 10 | 10-PB1G-006 | BACKHEAD SPRING |
| 11 | 10-PB1A-001 | BACKHEAD |
| * | 10-PB1A-002 | BACKHEAD COMPLETE |
| 19 | 10-PB1G-005 | OIL PLUG |
| 20 | 10-PB1E-001 | OIL CONTROL PLUG |
| 21 | 10-PB1G-019 | FRONTHEAD BARE |
| * | 10-PB1G-020 | FRONTHEAD COMPLETE |
| 23 | 10-PB1G-011 | BACKHEAD BOLT (4) |
| 24 | 10-PB1G-023 | BOLT WASHER |
| 25 | 10-PB1G-022 | BOLT NUT (5) |

| ITEM | PART NUMBER | DESCRIPTION |
|------|-------------|-----------------------------|
| 28 | 10-PB1G-024 | STEEL RETAINER |
| 29 | 10-PB1G-021 | RETAINER BOLT |
| 30 | 10-PB1G-015 | RETAINER BOLT NUT |
| 31 | 10-PB1G-016 | RETAINER BOLT LOCK WASHER |
| 32 | 10-PB1G-014 | RETAINER BOLT BUSHING |
| 33 | 10-PB1G-018 | RETAINER PLUNGER |
| 34 | 10-PB1G017 | PLUNGER SPRING |
| 35 | 10-PB1G-028 | AIR INLET SWIVEL |
| 36 | 10-PB1G-001 | AIR INLET SWIVEL NUT |
| 38 | 10-PB1G-004 | AIR INLET SCREEN |
| 39 | 10-PB1G-013 | FRONTHEAD BOLT |
| 44 | 10-PB1L-001 | CHUCK BUSHING (1 x 4 1/4) |
| 44A | 10-PB1K-001 | CHUCK BUSHING (7/8 x 3 1/4) |
| 45 | 10-PB1E-002 | OIL CONTROL FELT |
| 46 | 10-PB1G-002 | INLET SWIVEL O-RING |
| 47 | 10-PB1G-003 | INLET SWIVEL SPRING |
| 50 | 10-PB1A-009 | THROTTLE VALVE PUSH PIN |
| 51 | 10-PB1A-005 | THROTTLE VALVE BUSHING |
| 52 | 10-PB1A-006 | THROTTLE VALVE |
| 52B | 10-PB1A-012 | THROTTLE VALVE O-RING |
| 53 | 10-PB1A-007 | THROTTLE VALVE SPRING |
| 54 | 10-PB1A-008 | THROTTLE VALVE CAP |
| 55 | 10-PB1A-003 | THROTTLE LEVER |
| 56 | 10-PB1A-004 | THROTTLE LEVER PIN |
| 60 | 10-PB1A-010 | PUSH PIN BUSHING |

*Not shown in parts diagram.

PAVEMENT **BREAKERS**

MODEL **AT-PB30-78**

7/8" x 3-1/4"

| | |
|-------------------------------------|------------|
| Blows Per Minute | 1550 |
| Stroke | 3.375" |
| Bore | 1-3/4" |
| Length | 22.5" |
| Weight | 34 lbs |
| Air Inlet Thread | 3/8" |
| Avg. Air Consumption (90 PSI) | 49 cfm |
| Recommended Oil Weight | SAE 10W 20 |

MODEL **AT-PB30-1**

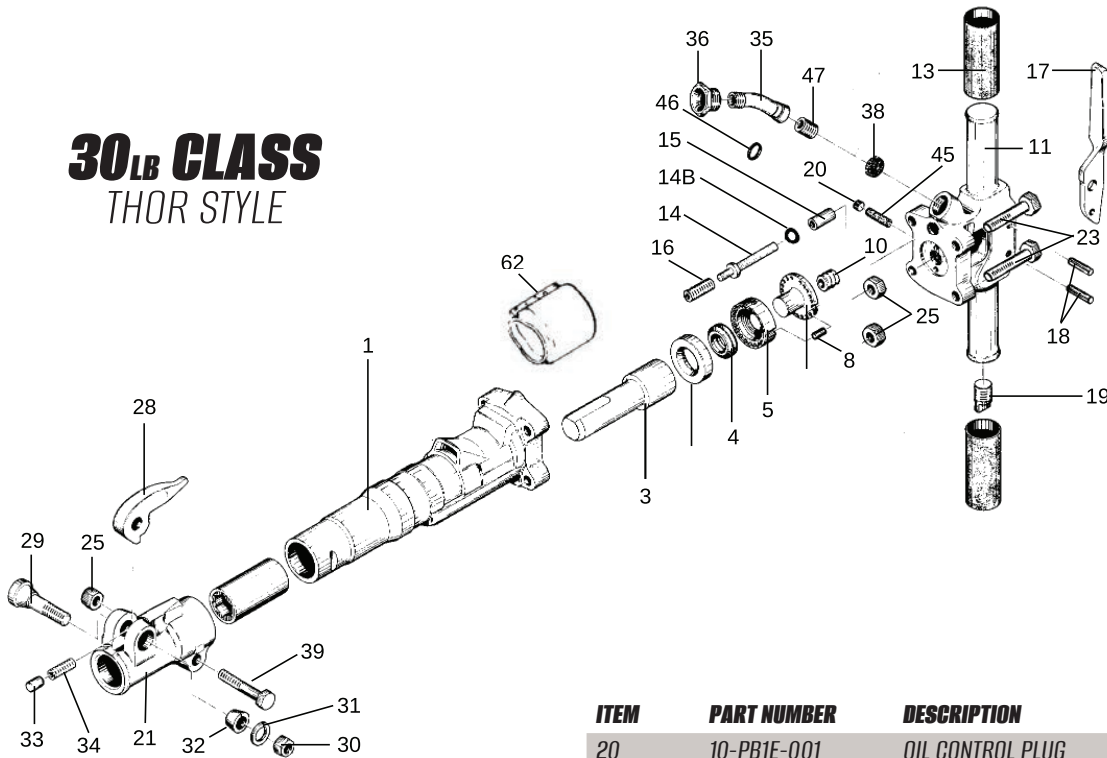
1" x 4-1/4"

| | |
|-------------------------------------|------------|
| Blows Per Minute | 1550 |
| Stroke | 3.375" |
| Bore | 1-3/4" |
| Length | 22.5" |
| Weight | 34 lbs |
| Air Inlet Thread | 3/8" |
| Avg. Air Consumption (90 PSI) | 49 cfm |
| Recommended Oil Weight | SAE 10W 20 |

30 LB CLASS
THOR STYLE



30LB CLASS THOR STYLE



| ITEM | PART NUMBER | DESCRIPTION |
|------|-------------|------------------------|
| 1 | 10-PB1G-012 | CYLINDER |
| 3 | 10-PB1G-010 | PISTON |
| 4 | 10-PB1G-026 | AUTOMATIC VALVE |
| 5 | 10-PB1G-008 | VALVE CHEST |
| 6 | 10-PB1B-009 | VALVE SEAT |
| 7 | 10-PB1G-027 | VALVE GUIDE |
| 8 | 10-PB1G-007 | VALVE DOWEL |
| 10 | 10-PB1G-006 | BACKHEAD SPRING |
| 11 | 10-PB1B-001 | BACKHEAD |
| * | 10-PB1B-002 | BACKHEAD COMPLETE |
| 13 | 10-PB1F-001 | HANDLE GRIP (2) |
| 14 | 10-PB1F-004 | THROTTLE VALVE |
| 14B | 10-PB1H-027 | THROTTLE VALVE O-RING |
| 15 | 10-PB1F-005 | THROTTLE VALVE BUSHING |
| 16 | 10-PB1B-003 | THROTTLE VALVE SPRING |
| 17 | 10-PB1F-002 | THROTTLE LEVER |
| 18 | 10-PB1F-003 | THROTTLE LEVER PIN |
| 19 | 10-PB1G-005 | OIL PLUG |

| ITEM | PART NUMBER | DESCRIPTION |
|------|-------------|---------------------------------|
| 20 | 10-PB1E-001 | OIL CONTROL PLUG |
| 21 | 10-PB1G-019 | FRONthead |
| * | 10-PB1G-020 | FRONthead COMPLETE |
| 23 | 10-PB1G-011 | BACKHEAD BOLT (4) |
| 24 | 10-PB1G-023 | BOLT WASHER |
| 25 | 10-PB1G-022 | BOLT NUT (5) |
| 28 | 10-PB1G-024 | STEEL RETAINER (FORGED) |
| 29 | 10-PB1G-021 | RETAINER BOLT |
| 30 | 10-PB1G-016 | RETAINER BOLT LOCKWASHER |
| 31 | 10-PB1G-015 | RETAINER BOLT NUT |
| 32 | 10-PB1G-014 | RETAINER BOLT BUSHING |
| 33 | 10-PB1G-018 | RETAINER PLUNGER |
| 34 | 10-PB1G017 | RETAINER PLUNGER SPRING |
| 35 | 10-PB1G-028 | AIR INLET SWIVEL |
| 36 | 10-PB1G-001 | AIR INLET SWIVEL NUT |
| 38 | 10-PB1G-004 | AIR INLET SCREEN |
| 39 | 10-PB1G-013 | FRONthead BOLT |
| * | 10-PB1J-001 | MACHINING PLUG |
| 44 | 10-PB1L-001 | CHUCK BUSHING (1" x 41/4" HEX) |
| 44A | 10-PB1K-001 | CHUCK BUSHING (7/8" x 1/4" HEX) |
| 45 | 10-PB1E-002 | OIL CONTROL FELT |
| 46 | 10-PB1G-002 | INLET SWIVEL O-RING |
| 47 | 10-PB1G-003 | INLET SWIVEL SPRING |
| * | 10-PB1G-029 | MUFFLER |

*Not shown in parts diagram.

PAVEMENT **BREAKERS**

MODEL **AT-PB60-118**

1-1/8" x 6"

| | |
|-------------------------------------|------------|
| Blows Per Minute | 1400 |
| Stroke | 4.0937" |
| Bore | 2-1/4" |
| Length | 25.625" |
| Weight | 67 lbs |
| Air Inlet Thread | 3/4" |
| Avg. Air Consumption (90 PSI) | 59 cfm |
| Recommended Oil Weight | SAE 10W 20 |

MODEL **AT-PB60-114**

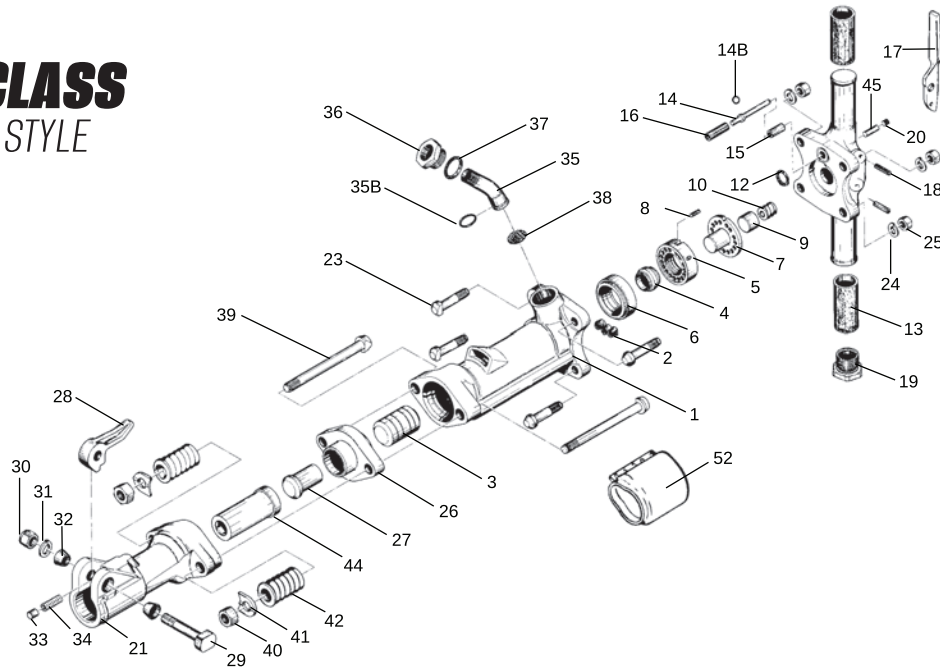
1-1/4" x 6"

| | |
|-------------------------------------|------------|
| Blows Per Minute | 1400 |
| Stroke | 4.0937" |
| Bore | 2-1/4" |
| Length | 25.625" |
| Weight | 67 lbs |
| Air Inlet Thread | 3/4" |
| Avg. Air Consumption (90 PSI) | 59 cfm |
| Recommended Oil Weight | SAE 10W 20 |

60 LB CLASS
THOR STYLE



60_{LB} CLASS THOR STYLE



| ITEM | PART NUMBER | DESCRIPTION |
|------|-------------|------------------------------|
| 1 | 10-PB1C-009 | CYLINDER |
| 2 | 10-PB1G-025 | CYLINDER PLUGS (3) |
| 3 | 10-PB1C-010 | PISTON |
| 4 | 10-PB1H-023 | AUTOMATIC VALVE |
| 5 | 10-PB1C-016 | VALVE CHEST |
| 6 | 10-PB1C-015 | VALVE SEAT |
| 7 | 10-PB1C-006 | VALVE GUIDE |
| 8 | 10-PB1H-024 | VALVE DOWEL PIN |
| 9 | 10-PB1H-025 | BACKHEAD PLUNGER |
| 10 | 10-PB1H-003 | BACKHEAD PLUNGER SPRING |
| 11 | 10-PB1C-001 | BACKHEAD BARE |
| * | 10-PB1C-002 | BACKHEAD ASSBLY. COMPLETE |
| 12 | 10-PB1H-004 | BACKHEAD VALVE PORT O-RING |
| 13 | 10-PB1F-001 | RUBBER GRIP (2) |
| 14 | 10-PB1F-004 | THROTTLE VALVE |
| 14B | 10-PB1H-027 | THROTTLE VALVE O-RING |
| 15 | 10-PB1F-005 | THROTTLE VALVE SLEEVE |
| 16 | 10-PB1H-026 | THROTTLE VALVE SPRING |
| 17 | 10-PB1F-002 | THROTTLE LEVER |
| 18 | 10-PB1F-003 | THROTTLE LEVER PIN (2) |
| 19 | 10-PB1C-004 | OIL RESERVOIR PLUG |
| 20 | 10-PB1E-001 | OIL CONTROL FELT PLUG |
| 21 | 10-PB1C-011 | FRONthead BARE |
| 23 | 10-PB1C-007 | BACKHEAD BOLT (4) |
| 24 | 10-PB1G-016 | BACKHEAD BOLT LOCKWASHER (4) |

| ITEM | PART NUMBER | DESCRIPTION |
|------|-------------|-----------------------------------|
| 25 | 10-PB1G-015 | BACKHEAD BOLT NUT (4) |
| 26 | 10-PB1C-014 | TAPPET SEAT |
| 27 | 10-PB1C-013 | TAPPET |
| 28 | 10-PB1H-016 | STEEL RETAINER (FORGED) |
| 29 | 10-PB1H-009 | STEEL RETAINER BOLT |
| 30 | 10-PB1H-014 | STEEL RETAINER BOLT NUT |
| 31 | 10-PB1H-015 | STEEL RETAINER LOCKWASHER |
| 32 | 10-PB1H-010 | RETAINER BOLT BUSHING (RUBBER)(2) |
| 33 | 10-PB1H-013 | STEEL RETAINER PLUNGER |
| 34 | 10-PB1H-012 | RETAINER PLUNGER SPRING |
| 35 | 10-PB1H-018 | AIR INLET SWIVEL |
| 35B | 10-PB1H-017 | AIR INLET SWIVEL O-RING |
| 36 | 10-PB1H-020 | AIR INLET SWIVEL NUT |
| 37 | 10-PB1H-019 | SWIVEL NUT O-RING |
| 38 | 10-PB1H-021 | AIR INLET SCREEN |
| 39 | 10-PB1C-008 | FRONthead BOLT(2) |
| 40 | 10-PB1H-008 | FRONthead BOLT NUT(2) |
| 41 | 10-PB1H-007 | FRONthead BOLT LOCKWASHER(2) |
| 42 | 10-PB1H-005 | FRONthead BOLT SPRING(2) |
| 44A | 10-PB10-001 | FRONthead BUSHING 1-1/8" HEX |
| 44B | 10-PB1P-001 | FRONthead BUSHING 1-1/4" HEX |
| 45 | 10-PB1E-002 | OIL CONTROL FELT |
| * | 10-PB1M-001 | FRONthead w/1-1/8" HEX BUSHING |
| * | 10-PB1N-001 | FRONthead w/1-1/4" HEX BUSHING |
| * | 10-PB1M-002 | FRONthead ASSBLY. w/1-1/8" HEX |
| * | 10-PB1N-002 | FRONthead ASSBLY. w/1-1/4" HEX |
| * | 10-PB1C-017 | MUFFLER ASSBLY. (OPTIONAL) |

*Not shown in parts diagram.

PAVEMENT **BREAKERS**

MODEL **AT-PB90-118**

1-1/8" x 6"

| | |
|-------------------------------------|------------|
| Blows Per Minute | 1250 |
| Stroke | 6.0625" |
| Bore | 2-5/8" |
| Length | 28.75" |
| Weight | 92.5 lbs |
| Air Inlet Thread | 3/4" |
| Avg. Air Consumption (90 PSI) | 75 cfm |
| Recommended Oil Weight | SAE 10W 20 |

MODEL **AT-PB90-114**

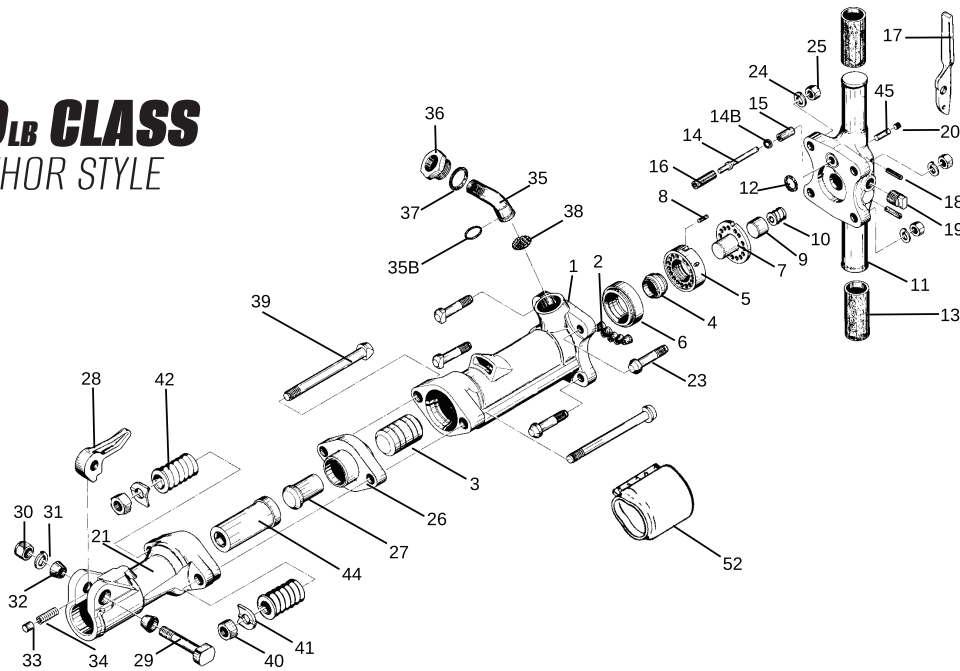
1-1/4" x 6"

| | |
|-------------------------------------|------------|
| Blows Per Minute | 1250 |
| Stroke | 6.0625" |
| Bore | 2-5/8" |
| Length | 28.75" |
| Weight | 92.5 lbs |
| Air Inlet Thread | 3/4" |
| Avg. Air Consumption (90 PSI) | 75 cfm |
| Recommended Oil Weight | SAE 10W 20 |

90_{LB} CLASS
THOR STYLE



90LB CLASS THOR STYLE



| ITEM | PART NUMBER | DESCRIPTION |
|------|-------------|------------------------------|
| 1 | 10-PB1D-008 | CYLINDER |
| 2 | 10-PB1G-025 | CYLINDER PLUGS |
| 3 | 10-PB1D-009 | PISTON |
| 4 | 10-PB1H-023 | AUTOMATIC VALVE |
| 5 | 10-PB1D-015 | VALVE CHEST |
| 6 | 10-PB1D-014 | VALVE SEAT |
| 7 | 10-PB1D-005 | VALVE GUIDE |
| 8 | 10-PB1H-024 | VALVE DOWEL PIN |
| 9 | 10-PB1H-025 | BACKHEAD PLUNGER |
| 10 | 10-PB1H-003 | BACKHEAD PLUNGER SPRING |
| 11 | 10-PB1D-002 | BACKHEAD BARE |
| * | 10-PB1D-003 | BACKHEAD ASSBLY. COMPLETE |
| 12 | 10-PB1C-005 | BACKHEAD VALVE PORT O-RING |
| 13 | 10-PB1F-001 | RUBBER GRIP (2) |
| 14 | 10-PB1F-004 | THROTTLE VALVE |
| 14B | 10-PB1H-027 | THROTTLE VALVE O-RING |
| 15 | 10-PB1F-005 | THROTTLE VALVE BUSHING |
| 16 | 10-PB1H-026 | THROTTLE VALVE SPRING |
| 17 | 10-PB1F-002 | THROTTLE LEVER |
| 18 | 10-PB1F-003 | THROTTLE LEVER PIN (2) |
| 19 | 10-PB1G-005 | OIL RESERVOIR PLUG |
| 20 | 10-PB1E-001 | OIL CONTROL FELT PLUG |
| 21 | 10-PB1D-10 | FRONTHEAD BARE |
| 23 | 10-PB1D-006 | BACKHEAD BOLT (4) |
| 24 | 10-PB1G-016 | BACKHEAD BOLT LOCKWASHER (4) |
| 25 | 10-PB1G-015 | BACKHEAD BOLT NUT (4) |

| ITEM | PART NUMBER | DESCRIPTION |
|------|-------------|------------------------------------|
| 26 | 10-PB1D-013 | TAPPET SEAT |
| 27 | 10-PB1D-012 | TAPPET |
| 28 | 10-PB1H-016 | STEEL RETAINER (FORGED) |
| 29 | 10-PB1H-009 | STEEL RETAINER BOLT |
| 30 | 10-PB1H-014 | STEEL RETAINER BOLT NUT |
| 31 | 10-PB1H-015 | STEEL RETAINER LOCKWASHER |
| 32 | 10-PB1H-010 | RETAINER BOLT BUSHING (RUBBER) (2) |
| 33 | 10-PB1H-013 | STEEL RETAINER PLUNGER |
| 34 | 10-PB1H-012 | RETAINER PLUNGER SPRING |
| 35 | 10-PB1H-018 | AIR INLET SWIVEL |
| 35B | 10-RB1G-005 | AIR INLET SWIVEL O-RING |
| 36 | 10-PB1H-020 | AIR INLET SWIVEL NUT |
| 37 | 10-PB1H-019 | SWIVEL NUT O-RING |
| 38 | 10-PB1H-021 | AIR INLET SCREEN |
| 39 | 10-PB1D-007 | FRONTHEAD BOLT (2) |
| 40 | 10-PB1H-008 | FRONTHEAD BOLT NUT (2) |
| 41 | 10-PB1H-007 | FRONTHEAD BOLT LOCKWASHER (2) |
| 42 | 10-PB1H-005 | FRONTHEAD BOLT SPRING (2) |
| 44 | 10-PB1D-001 | FRONTHEAD BUSHING 1-1/8" HEX |
| 44 | 10-PB1P-001 | FRONTHEAD BUSHING 1-1/4" HEX |
| 45 | 10-PB1E-002 | OIL CONTROL FELT |
| * | 10-PB1Q-001 | FRONTHEAD w/1-1/8" HEX BUSHING |
| * | 10-PB1R-001 | FRONTHEAD w/1-1/4" HEX BUSHING |
| * | 10-PB1Q-002 | FRONTHEAD ASSBLY. w/1-1/8" HEX |
| * | 10-PB1R-002 | FRONTHEAD ASSBLY. w/1-1/4" HEX |
| * | 10-PB1D-016 | OIL TANK PLUG |

*Not shown in parts diagram.

ROCK DRILLS

30_{LB} CLASS

MODEL **AT-RD30-78314**

7/8" x 3-1/4"

| | |
|-------------------------------------|------------|
| Blows Per Minute | 2700 |
| Stroke | 1.4375" |
| Bore | 2-7/16" |
| Length | 19.5" |
| Weight | 29 lbs |
| Air Inlet Thread | 3/4" |
| Avg. Air Consumption (90 PSI) | 73 cfm |
| Recommended Oil Weight | SAE 10W 20 |

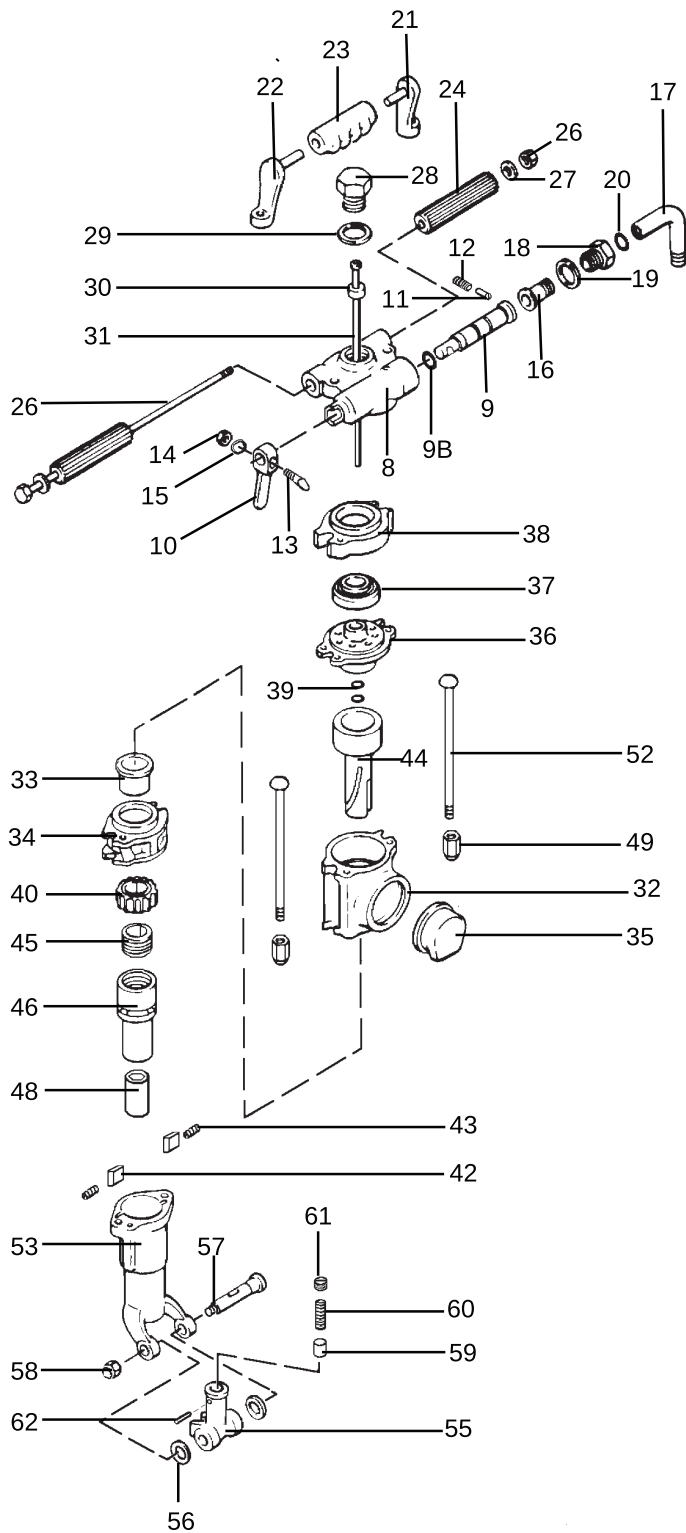
MODEL **AT-RD30-78414**

7/8" x 4-1/4"

| | |
|-------------------------------------|------------|
| Blows Per Minute | 2700 |
| Stroke | 1.4375" |
| Bore | 2-7/16" |
| Length | 19.5" |
| Weight | 29 lbs |
| Air Inlet Thread | 3/4" |
| Avg. Air Consumption (90 PSI) | 73 cfm |
| Recommended Oil Weight | SAE 10W 20 |



30LB CLASS



| ITEM | PART NUMBER | DESCRIPTION |
|------|-------------|----------------------------------|
| 8 | 10-RD1A-012 | BACKHEAD - DRY |
| 9B | 10-RD1A-056 | THROTTLE VALVE O-RING |
| 9 | 10-RD1A-011 | THROTTLE VALVE |
| 10 | 10-RD1A-045 | THROTTLE VALVE HANDLE |
| 11 | 10-RD1A-007 | THROTTLE VALVE PLUNGER |
| 12 | 10-RD1A-008 | THROTTLE VALVE SPRING |
| 13 | 10-RD1B-042 | THROTTLE VALVE BOLT |
| 14 | 10-RD1A-044 | THROTTLE BOLT NUT |
| 15 | 10-RD1A-046 | THROTTLE BOLT LOCKWASHER |
| 16 | 10-RD1A-010 | SWIVEL CONNECTION |
| 17 | 10-RD1A-004 | AIR CONNECTION ELBOW |
| 18 | 10-RD1A-006 | AIR CONNECTION NUT |
| 19 | 10-RD1A-009 | AIR CONNECTION NUT WASHER |
| 20 | 10-RD1A-005 | AIR CONNECTION O-RING |
| 21 | 10-RD1A-055 | LEFT GRIP SUPPORT |
| 22 | 10-RD1A-053 | RIGHT GRIP SUPPORT |
| 23 | 10-RD1A-054 | CENTER GRIP |
| 24 | 10-RD1A-001 | HANDLE GRIP (2) |
| 25 | 10-RD1A-048 | HANDLE BOLT |
| 26 | 10-RD1A-003 | HANDLE BOLT NUT |
| 27 | 10-RD1B-048 | HANDLE BOLT WASHER (2) |
| 28 | 10-RD1A-052 | BLOW TUBE GLAND |
| 29 | 10-RD1A-051 | TUBE GLAND GASKET |
| 30 | 10-RD1A-050 | TUBE GASKET |
| 31 | 10-RD1A-049 | BLOW TUBE |
| 32 | 10-RD1A-019 | CYLINDER |
| 33 | 10-RD1A-040 | FRONT WASHER |
| 34 | 10-RD1A-041 | FRONT WASHER BUSHING |
| 35 | 10-RD1A-018 | EXHAUST DEFLECTOR |
| 36 | 10-RD1A-015 | VALVE CHEST COVER |
| 37 | 10-RD1A-014 | AUTOMATIC VALVE |
| 38 | 10-RD1A-013 | VALVE CHEST |
| 39 | 10-RD1A-043 | VALVE CHEST COVER O-RING (2) |
| 40 | 10-RD1A-039 | RATCHET RING RIFLE NUT |
| 42 | 10-RD1A-021 | ROTATION PAWL (2) |
| 43 | 10-RD1A-020 | PAWL SPRING (2) |
| 44 | 10-RD1A-042 | PISTON |
| 45 | 10-RD1A-038 | SLEEVE NUT |
| 46 | 10-RD1A-036 | ROTATION SLEEVE - 3 1/4" SHANK |
| 46A | 10-RD1A-037 | ROTATION SLEEVE - 4 1/4" SHAN |
| 48 | 10-RD1A-034 | SLEEVE BUSHING 7/8" HEX x 3 1/4" |
| 48A | 10-RD1A-035 | SLEEVE BUSHING 7/8" HEX x 4 1/4" |
| 49 | 10-RD1A-017 | SIDE ROD NUT (2) |
| 52 | 10-RD1A-016 | SIDE ROD (2) |
| 53 | 10-RD1A-030 | FRONTHHEAD - 3 1/4" SHANK |
| 53 | 10-RD1A-031 | FRONTHHEAD - 4 1/4" SHANK |
| 55 | 10-RD1A-027 | STEEL RETAINER |
| 56 | 10-RD1A-026 | STEEL RETAINER PACKING(2) |
| 57 | 10-RD1A-022 | STEEL RETAINER BOLT |
| 58 | 10-RD1A-029 | STEEL RETAINER NUT |
| 59 | 10-RD1A-025 | STEEL RETAINER PLUNGER |
| 60 | 10-RD1A-024 | STEEL RETAINER SPRING |
| 61 | 10-RD1A-023 | STEEL RETAINER SCREW |
| 62 | 10-RD1A-028 | STEEL RETAINER PIN |

*Not shown in parts diagram.

Call
(815) 535-0647

ROCK DRILLS

MODEL AT-RD60-78414

7/8" x 4-1/4"

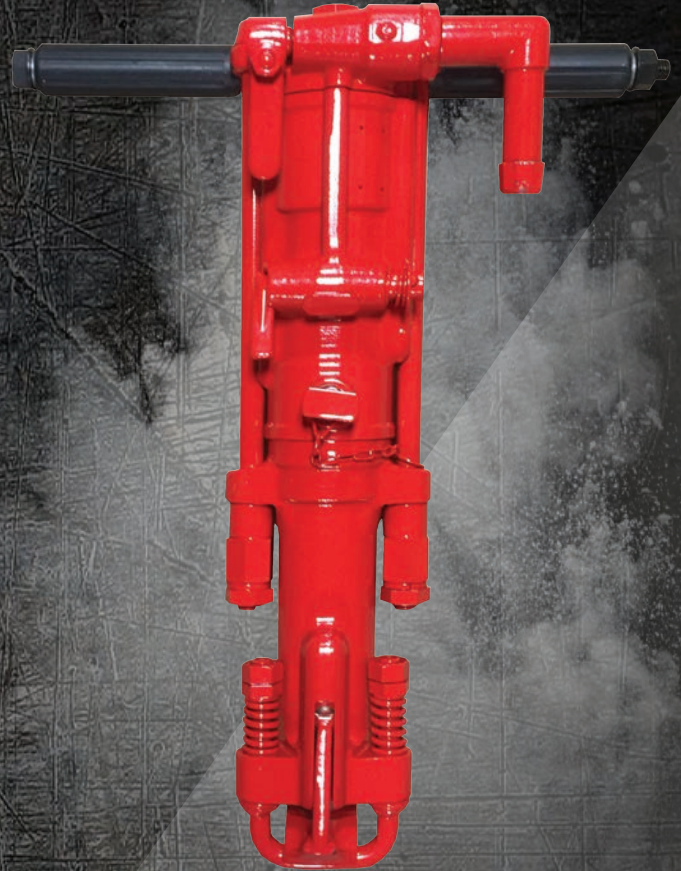
| | |
|-------------------------------------|------------|
| Blows Per Minute | 1800 |
| Stroke | 2.5625" |
| Bore | 2-5/8" |
| Length | 24" |
| Weight | 59 lbs |
| Air Inlet Thread | 3/4" |
| Avg. Air Consumption (90 PSI) | 98 cfm |
| Recommended Oil Weight | SAE 10W 20 |

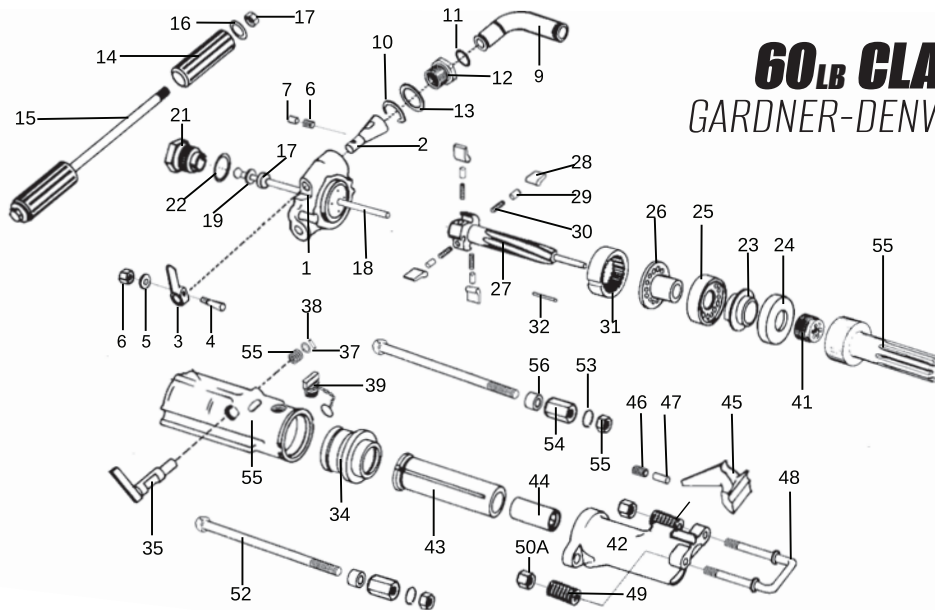
MODEL AT-RD60-1414

1" x 4-1/4"

| | |
|-------------------------------------|------------|
| Blows Per Minute | 1800 |
| Stroke | 2.5625" |
| Bore | 2-5/8" |
| Length | 24" |
| Weight | 59 lbs |
| Air Inlet Thread | 3/4" |
| Avg. Air Consumption (90 PSI) | 98 cfm |
| Recommended Oil Weight | SAE 10W 20 |

60 LB CLASS
GARDNER-DENVER STYLE





60LB CLASS GARDNER-DENVER STYLE

| ITEM | PART NUMBER | DESCRIPTION |
|------|-------------|------------------------------|
| 1 | 10-RD1B-40 | BACKHEAD W/BUSHING |
| * | 10-RD1B-041 | BACKHEAD BUSHING |
| 2 | 10-RD1B-004 | THROTTLE VALVE |
| 3 | 10-RD1B-043 | THROTTLE VALVE HANDLE |
| 4 | 10-RD1B-042 | THROTTLE VALVE HANDLE BOLT |
| 5 | 10-RD1B-044 | THROTTLE VALVE HANDLE WASHER |
| 6 | 10-RD1B-045 | THROTTLE HANDLE BOLT NUT |
| 7 | 10-RD1B-054 | DETENT PLUNGER |
| 8 | 10-RD1B-055 | DETENT SPRING |
| 9 | 10-RD1B-001 | AIR INLET SWIVEL |
| 10 | 10-RD1B-003 | SWIVEL RETAINER |
| 11 | 10-RD1B-057 | SWIVEL O-RING |
| 12 | 10-RD1B-002 | SWIVEL NUT |
| 13 | 10-RD1B-056 | SWIVEL WASHER |
| 14 | 10-RD1B-049 | HANDLE GRIP COMPLETE (2) |
| 15 | 10-RD1B-050 | HANDLE BOLT |
| 16 | 10-RD1B-048 | HANDLE BOLT WASHER (2) |
| 17 | 10-RD1B-051 | HANDLE BOLT NUT |
| 18 | 10-RD1B-039 | BLOW TUBE |
| 19 | 10-RD1B-046 | BLOW TUBE WASHER |
| 20 | 10-RD1B-053 | BLOW TUBE RUBBER SEAL |
| 21 | 10-RD1B-047 | BLOW TUBE GLAND |
| 22 | 10-RD1B-052 | BLOW TUBE GASKET |
| 23 | 10-RD1B-012 | AUTOMATIC VALVE |
| 24 | 10-RD1B-013 | FRONT VALVE CHEST |
| 25 | 10-RD1B-011 | REAR VALVE CHEST |
| 26 | 10-RD1B-010 | VALVE GUIDE |
| 27 | 10-RD1B-008 | RIFLE BAR |
| 28 | 10-RD1B-006 | PAWL (NON-REVERSIBLE) (4) |
| 29 | 10-RD1B-005 | PAWL PLUNGER (4) |
| 30 | 10-RD1B-007 | PAWL SPRING (COIL) (4) |
| 31 | 10-RD1B-009 | RATCHET RING |

| ITEM | PART NUMBER | DESCRIPTION |
|------|-------------|-------------------------------|
| 32 | 10-RD1B-038 | RATCHET DOWEL PIN |
| 33 | 10-RD1B-037 | CYLINDER |
| 34 | 10-RD1B-035 | CYLINDER BUSHING |
| 35 | 10-RD1B-036 | EXHAUST VALVE |
| 36 | 10-RD1B-019 | EXHAUST VALVE SPRING |
| 37 | 10-RD1B-018 | EXHAUST VALVE WASHER |
| 38 | 10-RB1B-017 | EXHAUST VALVE PIN |
| 39 | 10-PB1C-004 | OIL FILLER PLUG |
| 40 | 10-RD1B-015 | PISTON |
| 41 | 10-RD1B-014 | RIFLE NUT |
| 42 | 10-RD1B-029 | FRONTHEAD 1 x 4 1/4 |
| 42A | 10-RD1B-059 | FRONTHEAD 7/8 x 3 1/4 |
| 43 | 10-RD1B-034 | CHUCK DRIVER 1 x 4 1/4 |
| 43A | 10-RD1B-060 | CHUCK DRIVER 7/8 x 3 1/4 |
| 44 | 10-RD1B-033 | CHUCK BUSHING 1 x 4 1/4 HEX |
| 44A | 10-RD1B-032 | CHUCK BUSHING 7/8 x 4 1/4 HEX |
| 44B | 10-RD1B-061 | CHUCK BUSHING 7/8 x 3 1/4 HEX |
| 45 | 10-RD1B-027 | STEEL RETAINER 1 x 4 1/4 |
| 45A | 10-RD1B-062 | STEEL RETAINER 7/8 x 3 1/4 |
| 46 | 10-RD1B-026 | RETAINER PIVOT |
| 47 | 10-RD1B-025 | RETAINER SPRING |
| 48 | 10-RD1B-028 | RETAINER YOKE |
| 49 | 10-RD1B-030 | YOKE SPRING (2) |
| 50A | 10-RD1B-031 | YOKE NUT (NYLON 1*ERT) (2) |
| 52 | 10-RD1B-020 | SIDE ROD |
| 53 | 10-PB1H-015 | SIDE ROD LOCK WASHER (2) |
| 54 | 10-RD1B-022 | SIDE ROD NUT - LONG (2) |
| 55 | 10-RD1B-024 | SIDE ROD NUT - SHORT (2) |
| 56 | 10-RD1B-021 | SIDE ROD SPACER (2) |
| * | 10-RD1B-058 | MUFFLER |

*Not shown in parts diagram.

BENCH RAMMERS

MODEL AT-BR-2BA

2" STROKE

| | |
|-------------------------------------|------------|
| Blows Per Minute | 1725 |
| Stroke | 2" |
| Bore | 1" |
| Length | 16-1/2" |
| Weight | 7 lbs |
| Air Inlet Thread | 3/8" |
| Avg. Air Consumption (90 PSI) | 13 cfm |
| Taper | .802 |
| Min. Hose Size | 1/2" |
| Recommended Oil Weight | SAE 10W 20 |

MODEL AT-BR-1BA

4" STROKE

| | |
|-------------------------------------|------------|
| Blows Per Minute | 1240 |
| Stroke | 4" |
| Bore | 1" |
| Length | 21-1/2" |
| Weight | 10 lbs |
| Air Inlet Thread | 3/8" |
| Avg. Air Consumption (90 PSI) | 19 cfm |
| Taper | .802 |
| Min. Hose Size | 1/2" |
| Recommended Oil Weight | SAE 10W 20 |



#202



#203



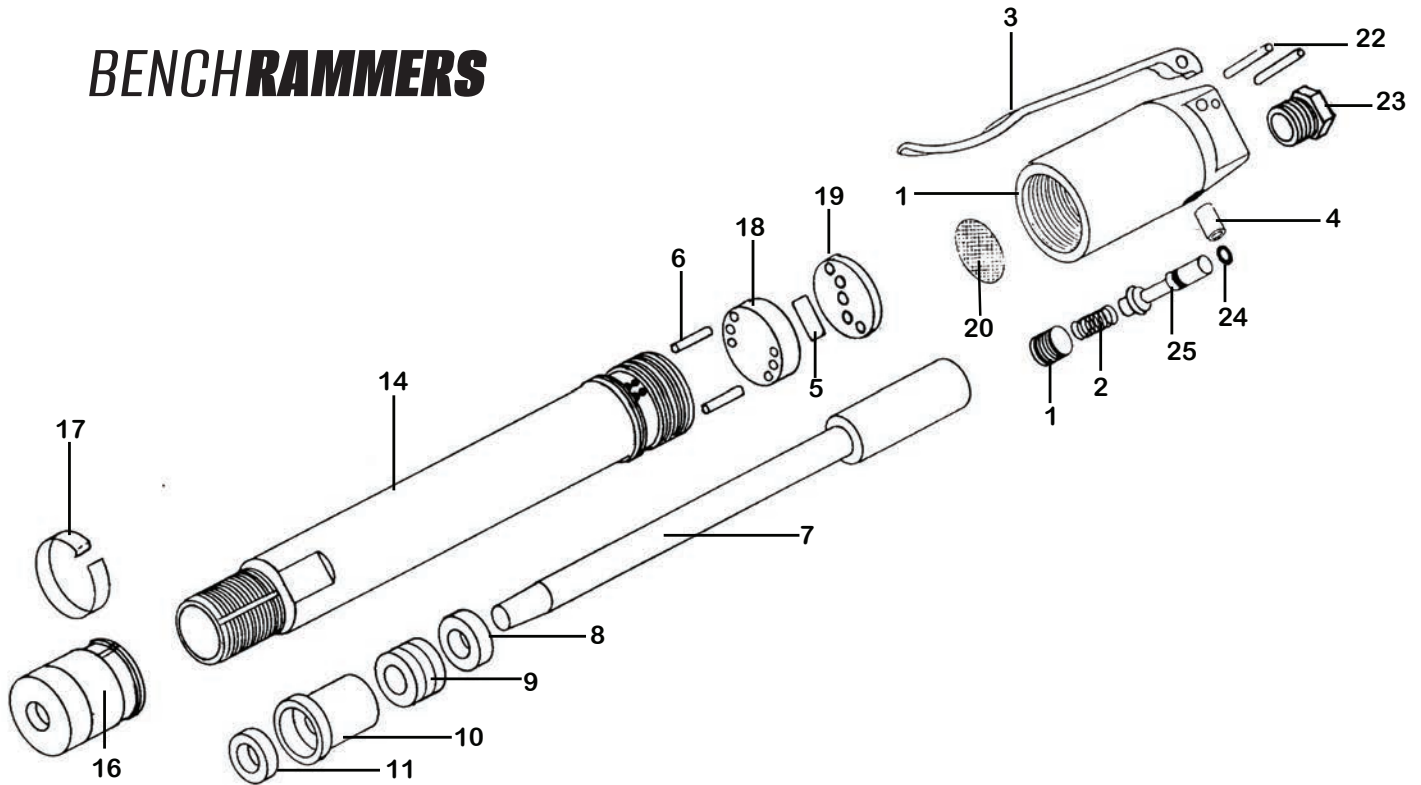
RUBBER RAMMER BUTTS

| Tool Model No. | Size |
|-----------------------|-------------|
| BRB-201-802 | 1-3/4" |
| BRB-202-802 | 2-1/2" |
| BRB-203-802 | 3-1/4" |

| Part No. | Description |
|-----------------|-------------------------|
| 2BA-TX00202 | Steel Butt W/ Bolt Hole |
| 2BA-TX00203 | Socket Screw |

Bench Rammers are sold with a 2-1/2" Rubber Butt

BENCH RAMMERS



| ITEM | PART NUMBER | DESCRIPTION |
|------|-------------|-----------------------------|
| 1 | 10-RM2E-018 | BACKHEAD |
| 2 | 10-RM2E-002 | THROTTLE VALVE SPRING |
| 3 | 10-RM2E-003 | LEVER |
| 4 | 10-RM2E-019 | THROTTLE LEVER PIN |
| 5 | 10-RM2E-006 | VALVE |
| 6 | 10-RM2E-007 | VALVE BLOCK DOWEL PIN |
| 7 | 10-RM2A-001 | PISTON- NO THREADS (2BA) |
| * | 10-RM2B-001 | PISTON (1BA) |
| * | 10-RM2A-002 | PISTON WITH THREADS (2BA) |
| 8 | 10-RM2E-008 | PACKING GLAND WASHER |
| 9 | 10-RM2E-009 | PACKING SET |
| 10 | 10-RM2A-003 | PACKING GLAND BUSHING (2BA) |

| ITEM | PART NUMBER | DESCRIPTION |
|------|-------------|-----------------------------|
| * | 10-RM2B-002 | PACKING GLAND BUSHING (1BA) |
| 11 | 10-RM2E-010 | FRONT ROD SEAL |
| 14 | 10-RM2B-003 | CYLINDER(1BA) |
| * | 10-RM2A-004 | CYLINDER(2BA) |
| 16 | 10-RM2E-013 | PACKING NUT |
| 17 | 10-RM2E-014 | PACKING NUT LOCK CLIP |
| 18 | 10-RM2E-015 | VALVE BLOCK |
| 19 | 10-RM2E-016 | VALVE BLOCK LID |
| 20 | 10-RM2E+017 | SCREEN |
| 22 | 10-RM2E-019 | THROTTLE LEVER PIN |
| 23 | 10-RM2E020 | INLET BUSHING |
| 24 | 10-RM2E-022 | THROTTLE VALVE O-RING |
| 25 | 10-RM2E-005 | THROTTLE VALVE |

*Not shown in parts diagram.

SAND **RAMMERS**

MODEL **AT-BR-00**

804 Taper

| | |
|-------------------------------------|------------|
| Blows Per Minute | 1600 |
| Stroke | 2" |
| Bore | 7/10" |
| Length | 12" |
| Weight | 4 lbs |
| Air Inlet Thread | 3/8" |
| Avg. Air Consumption (90 PSI) | 12 cfm |
| Taper | 401 |
| Recommended Oil Weight | SAE 10W 20 |



RUBBER RAMMER BUTTS

| Tool Model No. | Attachment No. | Size |
|-----------------------|-----------------------|-------------|
| AT-BR-00 | BRB-201S | 1-3/4" |
| | BRB-202S | 2-1/2" |
| | BRB-203S | 3-1/4" |

BRB-201S



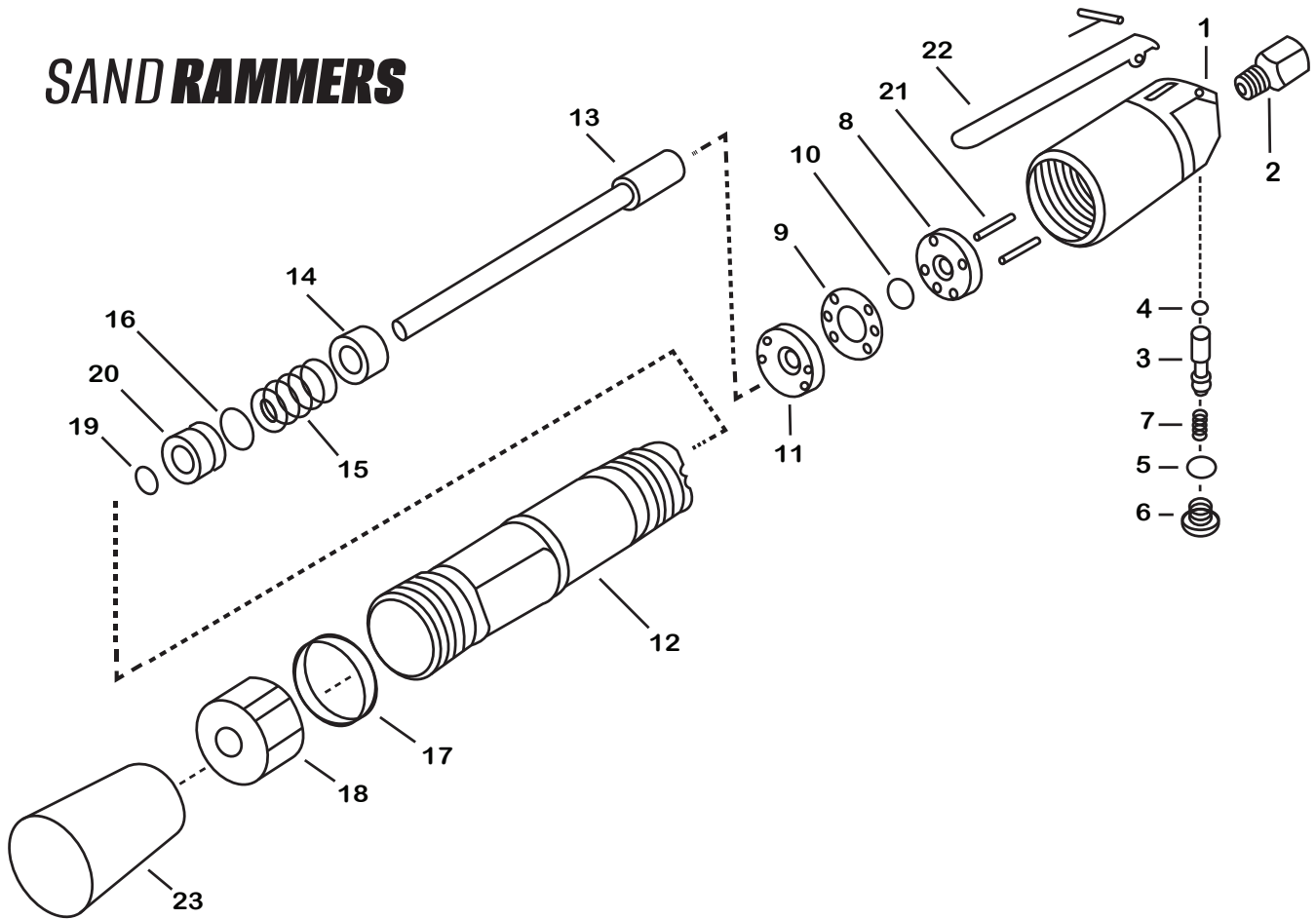
BRB-203S



BRB-202S



SAND RAMMERS

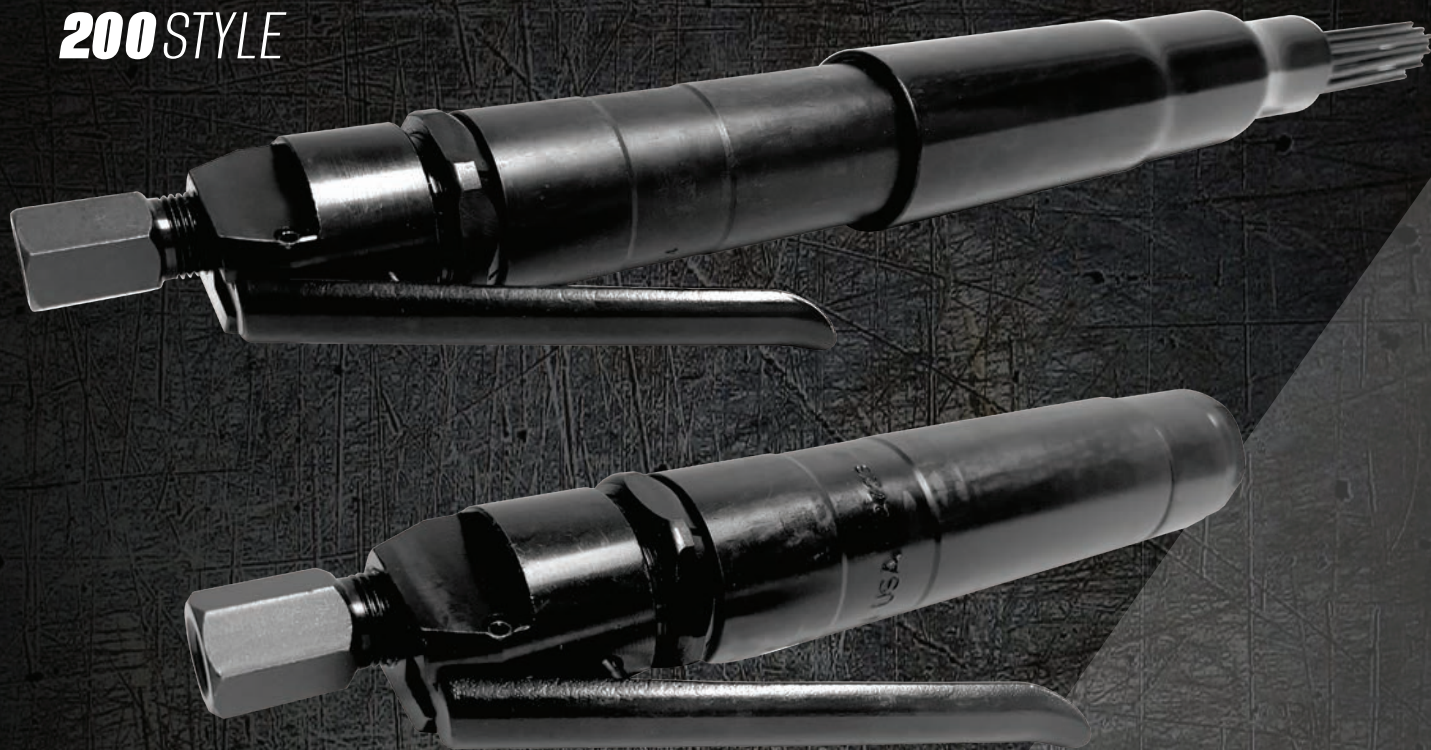


| ITEM | PART NUMBER | DESCRIPTION |
|------|-------------|-----------------|
| 1 | 10-RM2C-001 | BACKHEAD |
| 2 | 10-RM2C-002 | INLET BUSHING |
| 3 | 10-RM2C-003 | THROTTLE VALVE |
| 4 | 10-RM2C-004 | O-RING |
| 5 | 10-RM2C-005 | O-RING |
| 6 | 10-RM2C-006 | THROTTLE PLUG |
| 7 | 10-RM2C-007 | THROTTLE SPRING |
| 8 | 10-RM2C-008 | TOP VALVE |
| 9 | 10-RM2C-009 | VALVE WASHER |
| 10 | 10-RM2C-010 | MAIN VALVE |
| 11 | 10-RM2C-011 | BOTTOM VALVE |
| 12 | 10-RM2C-012 | BARREL |

| ITEM | PART NUMBER | DESCRIPTION |
|------|-------------|-------------------|
| 13 | 10-RM2C-013 | PISTON |
| 14 | 10-RM2C-014 | GLAND WASHER |
| 15 | 10-RM2C-015 | PACKING (20 PC) |
| 16 | 10-RM2C-016 | O-RING |
| 17 | 10-RM2C-017 | LOCK NUT |
| 18 | 10-RM2C-018 | GLAND CAP |
| 19 | 10-RM2C-019 | O-RING |
| 20 | 10-RM2C-020 | GLAND BUSHING |
| 21 | 10-RM2C-021 | PIN |
| 22 | 10-RB2C-022 | THROTTLE LEVER |
| 23 | BRB-201S | 1.75" RUBBER BUTT |

WELD FLUX **SCALERS**

200 STYLE



MODEL **AT-SG-200**

Scaler

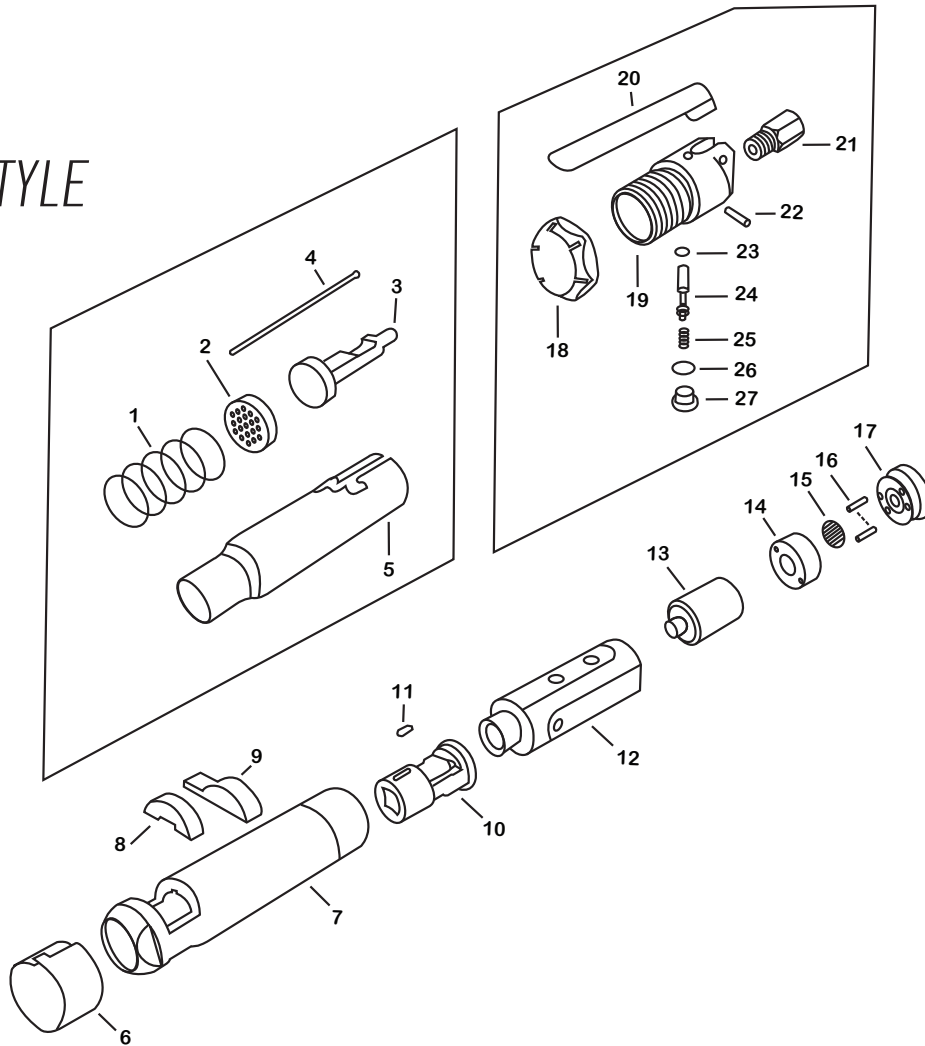
| | |
|-------------------------------------|------------|
| Blows Per Minute | 4600 |
| Stroke | 1-1/8" |
| Bore | 1" |
| Length | 15" |
| Weight | 4.75 lbs |
| Air Inlet Thread | 1/4" |
| Minimum Hose Size | 5/16" |
| Avg. Air Consumption (90 PSI) | 12 cfm |
| Recommended Oil Weight | SAE 10W 20 |

MODEL **AT-NS-200**

Needle Scaler

| | |
|-------------------------------------|-------------|
| Blows Per Minute | 4600 |
| Stroke | 1-1/8" |
| Bore | 1" |
| Length | 17" |
| Weight | 6.25 lbs |
| Air Inlet Thread | 1/4" |
| Minimum Hose Size | 5/16" |
| Avg. Air Consumption (90 PSI) | 12 cfm |
| Recommended Oil Weight | SAE 10 W 20 |

200 STYLE

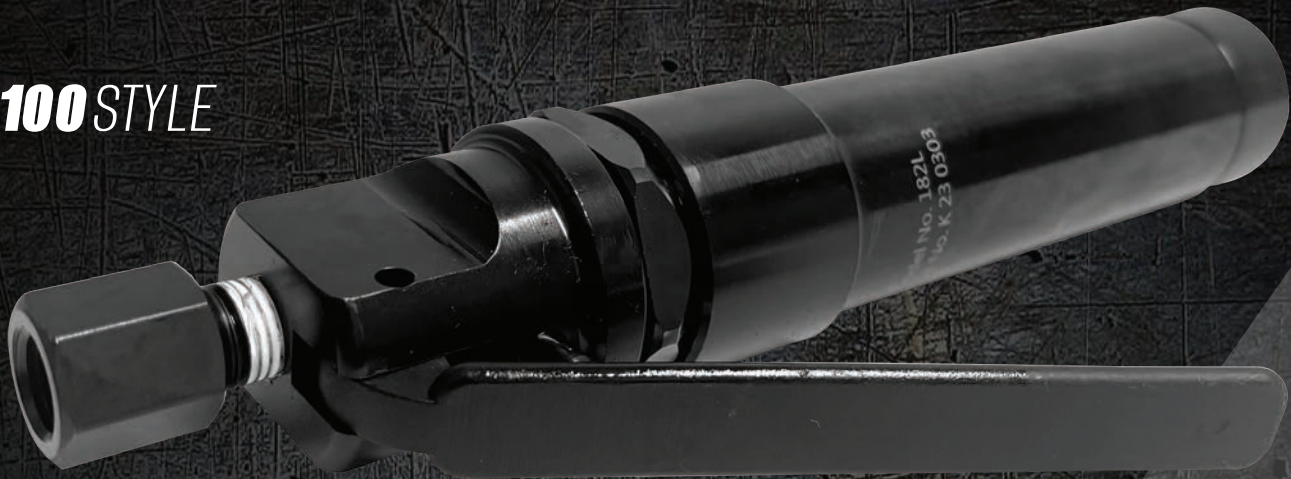


| ITEM | PART NUMBER | DESCRIPTION |
|------|-------------|-------------------|
| 1 | 10-SC2A-001 | NEEDLE SPRING |
| 2 | 10-SC2A-002 | NEEDLE HOLDER |
| 3 | 10-SC2A-003 | NEEDLE DRIVER |
| 4 | 10-SC2A-004 | 7" SCALER NEEDLE |
| 5 | 10-SC2A-005 | NEEDLE TUBE |
| 6 | 10-SC2A-006 | STOPPER SPRING |
| 7 | 10-SC2A-007 | LINER CASE |
| 8 | 10-SC2A-008 | CUSHION SEAT |
| 9 | 10-SC2A-009 | METAL STOPPER |
| 10 | 10-SC2A-010 | SQUARE BUSHING |
| 11 | 10-SC2A-011 | LINER STUD KEY |
| 12 | 10-SC2A-012 | LINER |
| 13 | 10-SC2A-013 | PISTON |
| 14 | 10-SC2A-014 | BOTTOM VALVE SEAT |

| ITEM | PART NUMBER | DESCRIPTION |
|------|-------------|-------------------------|
| 15 | 10-SC2A-015 | FLUTTER VALVE |
| 16 | 10-SC2A-016 | VALVE PIN |
| 17 | 10-SC2A-017 | TOP VALVE SEAT |
| 18 | 10-SC2C-001 | BACKHEAD LOCK RING |
| 19 | 10-SC2A-019 | SLOTTED HANDLE |
| 20 | 10-SC2A-020 | THROTTLE LEVER |
| 21 | 10-SC2A-021 | INLET BUSHING |
| 22 | 10-SC2C-002 | LEVER KNOCK PIN |
| 23 | 10-SC2C-003 | THROTTLE VALVE O-RING |
| 24 | 10-SC2A-022 | THROTTLE VALVE w/O-RING |
| 25 | 10-SC2A-023 | THROTTLE SPRING |
| 26 | 10-SC2A-024 | THROTTLE PLUG GASKET |
| 27 | 10-SC2A-025 | THROTTLE PLUG |

WELD FLUX **SCALERS**

100 STYLE



MODEL **AT-SG-100**

Scaler

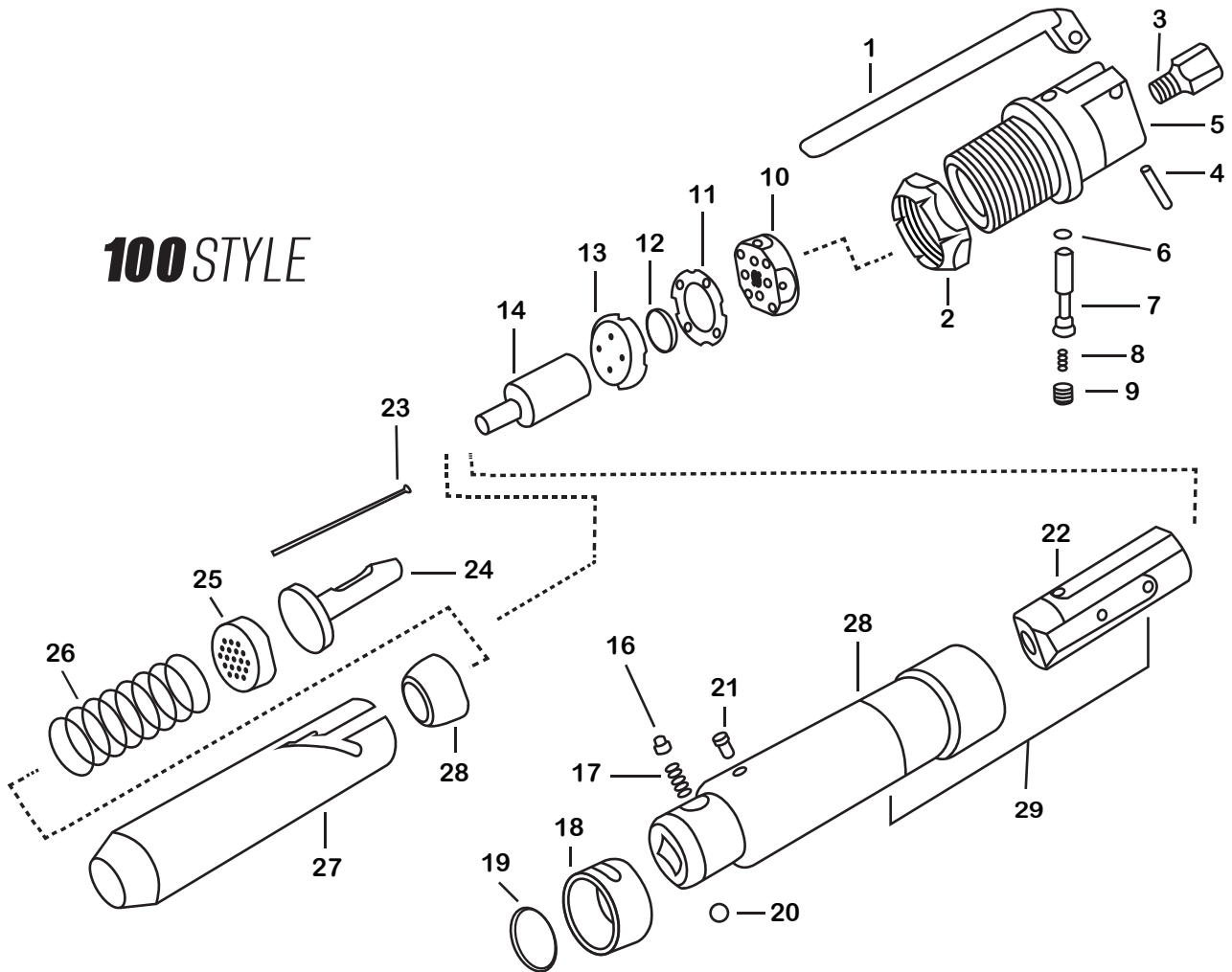
| | |
|-------------------------------------|------------|
| Blows Per Minute | 4000 |
| Stroke | 1-1/16" |
| Bore | 15/16" |
| Length | 15" |
| Weight | 6.3 lbs |
| Air Inlet Thread | 1/4" |
| Received Hose Size | 1/4" |
| Avg. Air Consumption (90 PSI) | 13 cfm |
| Recommended Oil Weight | SAE 10W 20 |

MODEL **AT-NS-100**

Needle Scaler

| | |
|-------------------------------------|------------|
| Blows Per Minute | 4000 |
| Stroke | 1-1/16" |
| Bore | 15/16" |
| Length | 17" |
| Weight | 8.35 lbs |
| Air Inlet Thread | 1/4" |
| Minimum Hose Size | 1/4" |
| Avg. Air Consumption (90 PSI) | 13 cfm |
| Recommended Oil Weight | SAE 10W 20 |

100 STYLE



| ITEM | PART NUMBER | DESCRIPTION |
|------|-------------|---------------------------|
| 1 | 10-SC2B-001 | THROTTLE LEVER |
| 2 | 10-SC2C-001 | BACKHEAD LOCK RING |
| 3 | 10-SC2B-002 | INLET BUSHING |
| 4 | 10-SC2C-002 | LEVER PIN |
| 5 | 10-SC2B-003 | SLOTTED HANDLE |
| 6 | 10-SC2C-003 | THROTTLE VALVE O-RING |
| 7 | 10-SC2B-004 | THROTTLE VALVE |
| 8 | 10-SC2B-005 | THROTTLE VALVE SPRING |
| 9 | 10-SC2B-006 | THROTTLE VALVE CAP |
| 10 | 10-SC2B-007 | VALVE CAP |
| 11 | 10-SC2B-009 | VALVE SPACER |
| 12 | 10-SC2B-010 | FLUTTER VALVE FOR 100 STL |
| 13 | 10-SC2B-011 | VALVE SEAT |
| 14 | 10-SC2B-012 | PISTON |

| ITEM | PART NUMBER | DESCRIPTION |
|------|-------------|----------------------------|
| 15 | 10-SC2B-013 | BARREL ONLY |
| 16 | 10-SC2B-014 | LOCK PLUNGER |
| 17 | 10-SC2B-016 | CASE w/LINER & NOSE ASSEM. |
| 18 | 10-SC2B-017 | RETAINER SLEEVE |
| 19 | 10-SC2B-018 | LOCK SHIM RING |
| 20 | 10-SC2B-019 | RETAINER STEEL BALL |
| 21 | 10-SC2B-020 | RETAINER PIN |
| 22 | 10-SC2B-021 | LINER ONLY |
| 23 | 10-SC2C-004 | 5" SCALER NEEDLE |
| 24 | 10-SC2B-022 | NEEDLE DRIVER |
| 25 | 10-SC2B-023 | NEEDLE HOLDER |
| 26 | 10-SC2B-024 | ANVIL SPRING |
| 27 | 10-SC2B-025 | NEEDLE TUBE |
| 28 | 10-SC2B-026 | I*ERT FOR HOUSING |
| 29 | 10-SC2B-015 | CASE WITH LINER |

LONG REACH **FLOOR SCRAPER**



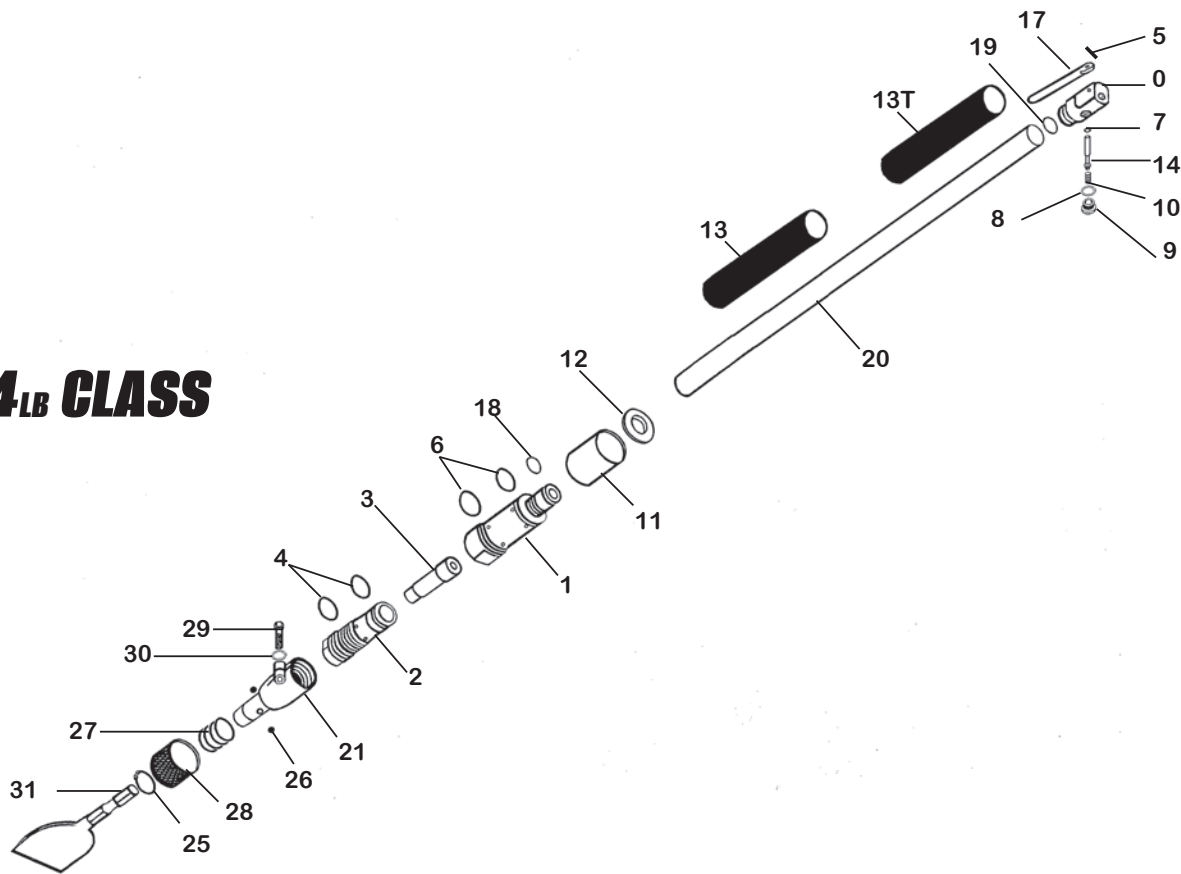
14_{LB} CLASS

MODEL **AT-LR-LW59**

.590" HEX

| | |
|-------------------------------------|------------|
| Blows Per Minute | 2500 |
| Stroke | 1.501" |
| Bore | 1.1875" |
| Length | 24" |
| Weight | 14 lbs |
| Air Inlet Thread | 1/4" |
| Avg. Air Consumption (90 PSI) | 9 cfm |
| Recommended Oil Weight | SAE 10W 20 |

14_{LB} CLASS



| ITEM | PART NUMBER | DESCRIPTION |
|------|-------------|-----------------------|
| 1 | 10-LR1A-011 | CYLINDER |
| 2 | 10-LR1A-012 | CYLINDER SLEEVE |
| 3 | 10-LR1A-022 | PISTON |
| 4A | 10-LR1A-020 | SLEEVE O-RING |
| 4B | 10-LR1A-021 | SLEEVE O-RING |
| 5 | 10-LR1A-001 | LEVER FULCRUM PIN |
| 6A | 10-LR1A-023 | CYLINDER O-RING |
| 6B | 10-LR1A-024 | CYLINDER O-RING |
| 7 | 10-LR1A-004 | THROTTLE VALVE O-RING |
| 8 | 10-LR1A-008 | THROTTLE VALVE SPRING |
| 9 | 10-LR1A-007 | THROTTLE PLUG |
| 10 | 10-LR1A-006 | THROTTLE PLUG O-RING |
| 14 | 10-LR1A-005 | THROTTLE VALVE |
| 11 | 10-LR1A-010 | EXHAUST SLEEVE |
| 12 | 10-LR1A-027 | EXHAUST SLEEVE CAP |
| 13 | 10-LR1A-028 | RUBBER GRIP |

| ITEM | PART NUMBER | DESCRIPTION |
|------|-------------|------------------------|
| 13T | 10-LR1A-029 | RUBBER THROTTLE GRIP |
| 17 | 10-LR1A-030 | THROTTLE LEVER |
| 18 | 10-LR1A-025 | CONNECTION O-RING (2) |
| 19 | 10-LR1A-026 | CONNECTING PIPE SHIM |
| 20 | 10-LR1A-009 | CONNECTING PIPE |
| 21 | 10-LR1A-013 | FRONT HEAD |
| 25 | 10-LR1A-016 | RETAINING RING |
| 26 | 10-LR1A-014 | RETAINER BALL (2) |
| 27 | 10-LR1A-017 | RETAINER SPRING |
| 28 | 10-LR1A-015 | RETAINER |
| 29 | 10-LR1A-019 | FRONT HEAD BOLT |
| 30 | 10-LR1A-018 | FRONT HEAD BOLT WASHER |
| 32 | 10-LR1A-002 | THROTTLE BODY |
| * | 10-LR1A-003 | THROTTLE BODY COMPLETE |

*Not shown in parts diagram.

HEAVY DUTY **SCRAPERS**

MODEL **AT-LR-HD58**

.580" HEX

| | |
|------------------------------------|------------|
| Blows Per Minute | 3850 |
| Stroke | 1.5" |
| Bore | 1.5" |
| Length..... | 53" |
| Weight | 17 lbs |
| Air Inlet Thread | 1/2" |
| Avg. Air Consumption (90 PSI)..... | 12 cfm |
| Recommended Oil Weight | SAE 10W 20 |

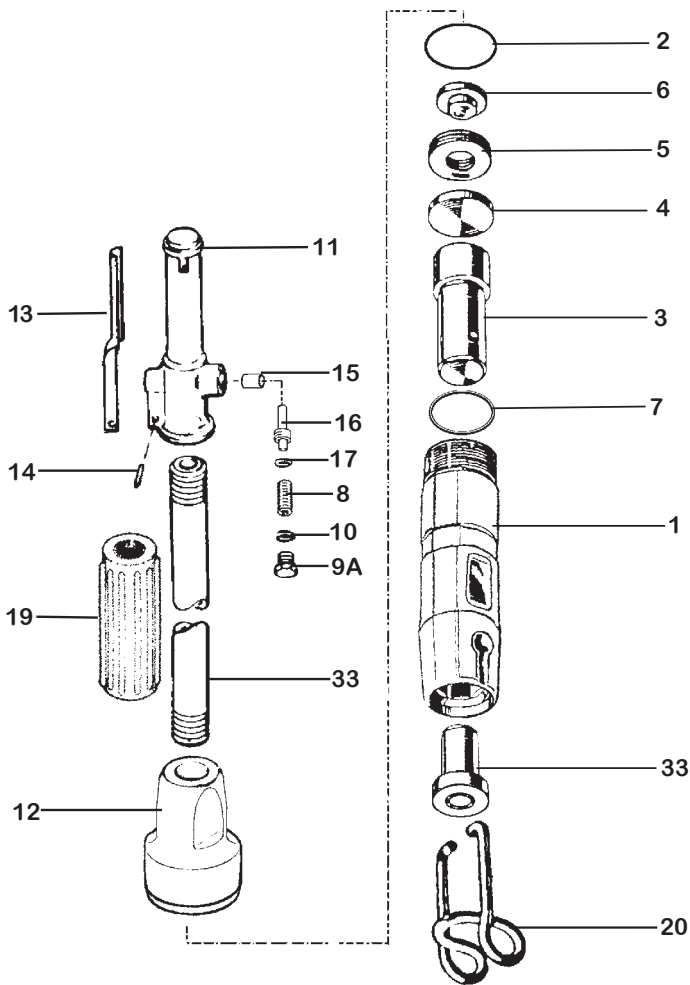
MODEL **AT-LR-HD68**

.680" HEX

| | |
|------------------------------------|------------|
| Blows Per Minute | 3850 |
| Stroke | 1.5" |
| Bore | 1.5" |
| Length..... | 53" |
| Weight..... | 17 lbs |
| Air Inlet Thread | 1/2" |
| Avg. Air Consumption (90 PSI)..... | 12 cfm |
| Recommended Oil Weight | SAE 10W 20 |



HEAVY DUTY SCRAPERS



| ITEM | PART NUMBER | DESCRIPTION |
|------|-------------|-----------------------------------|
| 1 | 10-LR1B-011 | CYLNR - RPLCBL BUSHING (HEX.580") |
| 2 | 10-CH10-001 | CYLINDER O-RING |
| 3 | 10-LR1B-009 | PISTON |
| 4 | 10-LR1B-008 | BUMMPER VALVE PLATE |
| 5 | 10-LR1B-007 | VALVE SPRINGS (3) |
| 6 | 10-LR1B-006 | UPPER VALVE PLATE |
| 7 | 10-LR1B-010 | LOWER VALVE RING |
| 11 | 10-RM1F-001 | THROTTLE BODY BARE |
| * | 10-RM1F-002 | THROTTLE BODY COMPLETE |
| 12 | 10-LR1B-005 | SOLID BACKHEAD |
| 13 | 10-RM1F-006 | THROTTLE LEVER |
| 14 | 10-RM1F-005 | LEVER FULCRUM PIN |
| 15 | 10-RM1F-020 | THROTTLE VALVE BUSHING |
| 16 | 10-LR1B-002 | THROTTLE VALVE |
| 17 | 10-LR1B-003 | THROTTLE VALVE O-RING |
| 8 | 10-CH1M-002 | THROTTLE VALVE SPRING |
| 9A | 10-RM1F-003 | THROTTLE VALVE PLUG |
| 10 | 10-RM1F-004 | THROTTLE PLUG O-RING |
| 19 | 10-LR1B-001 | RUBBER GRIP |
| 18 | 10-LR1B-004 | CONNECTING PIPE (36") |
| 20 | 10-LR1B-014 | RETAINER SPRING |
| 33 | 10-LR1B-012 | CHISEL BUSHING HEX .580" |
| * | 10-LR1B-013 | CHISEL BUSHING RND .680" |

*Not shown in parts diagram.

TAMPERS

MODEL **AT-FR-6T**

804 Taper

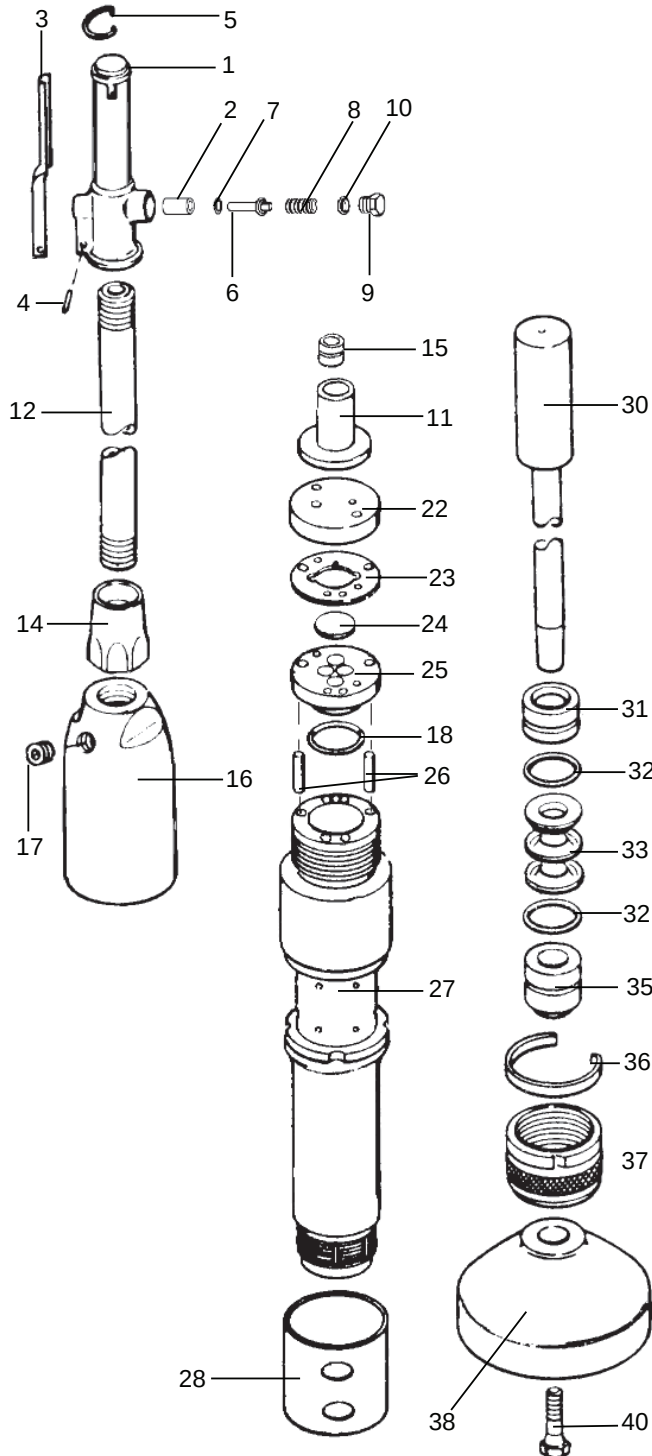
| | |
|-------------------------------------|------------|
| Blows Per Minute | 800 |
| Stroke | 5.5" |
| Bore | 1.5" |
| Length | 48.25" |
| Weight | 40 lbs |
| Air Inlet Thread..... | 1/2" |
| Avg. Air Consumption (90 PSI) | 38.5 cfm |
| Taper | 804 |
| Recommended Oil Weight | SAE 10W 20 |

Tampers are sold with a 6" Malleable Iron Butt

40LB CLASS



40LB CLASS



| ITEM | PART NUMBER | DESCRIPTION |
|------|-------------|-----------------------------|
| * | 10-RM1F-002 | THROTTLE BODY COMPLETE |
| 1 | 10-RM1F-001 | THROTTLE BODY BARE |
| 2 | 10-RM1D-001 | THROTTLE VALVE BUSHING |
| 3 | 10-RM1F-006 | THROTTLE LEVER |
| 4 | 10-RM1F-005 | THROTTLE LEVER FULCRUM PIN |
| 5 | 10-RM1F-030 | THROTTLE LEVER LOCKING CLIP |
| 6 | 10-RM1F-031 | THROTTLE VALVE |
| 7 | 10-RM1F-032 | THROTTLE VALVE O-RING |
| 8 | 10-CH1M-002 | THROTTLE VALVE SPRING |
| 9 | 10-RM1F-003 | THROTTLE VALVE PLUG |
| 10 | 10-RM1F-004 | THROTTLE VALVE PLUG O-RING |
| 11 | 10-RM1D-021 | OIL RESERVOIR END CAP |
| 12 | 10-RM1D-026 | CONNECTING PIPE |
| 14 | 10-RM1D-023 | CONNECTING PIPE NUT |
| 15 | 10-RM1D-022 | OIL CONTROL BUSHING |
| 16 | 10-RM1D-024 | BACKHEAD |
| * | 10-RM1D-025 | BACKHEAD ASSEMBLY |
| 17 | 10-PB1J-001 | OIL PLUG |
| 18 | 10-RM1D-016 | LOWER VALVE BLOCK O-RING |
| 22 | 10-RM1D-020 | UPPER VALVE BLOCK |
| 23 | 10-RM1D-019 | CENTER PLATE |
| 24 | 10-RM1D-018 | VALVE DISC |
| 25 | 10-RM1D-016 | LOWER VALVE BLOCK O-RING |
| 26 | 10-RM1D-015 | VALVE DOWEL PIN (2) |
| 27 | 10-RM1D-014 | BARREL |
| 28 | 10-RM1D-013 | EXHAUST DEFLECTOR (RUBBER) |
| 30 | 10-RM1D-002 | PLUNGER |
| 31 | 10-RM1D-003 | UPPER GUIDE BUSHING |
| 32 | 10-RM1D-004 | GUIDE BUSHING O-RING (2) |
| 33 | 10-RM1D-005 | PLUNGER PACKING SET |
| 35 | 10-RM1D-006 | LOWER GUIDE BUSHING |
| 36 | 10-RM1D-007 | PACKING NUT LOCK CLIP |
| 37 | 10-RM1D-008 | PACKING NUT |
| 38 | 10-RM1D-010 | 6" MALLEABLE IRON BUTT |
| * | BRB-AL3T | 3" ALUMINUM BUTT |
| * | BRB-AL4T | 4" ALUMINUM BUTT |
| * | 10-RM1F-033 | POWER POLE BUTT |
| 40 | 10-RM1D-009 | CLAMP SCREW |

*Not shown in parts diagram.

ACCESSORIES

CHIPPING HAMMER

| Part Number | Description |
|--------------------|--|
| CHR-1190CP | Solid/Taper/Oval (Chicago Pneumatic Style) |
| CHR-1190IR | Solid/Taper/Oval (Ingersoll Rand Style) |
| CHR-1190SUL | Solid/Taper/Oval (Sullair Style) |
| CHR-11901655 | Solid/Straight/Oval (K2L Style) |
| CHR-1190APT | Solid/Straight/Oval (APT Style) |
| CHR-1291CP | Quick Change/Taper (Chicago Pneumatic Style) |
| CHR-1291IR | Quick Change/Taper (Ingersoll Rand Style) |
| CHR-1291SUL | Quick Change/Taper (Sullair Style) |
| CHR-1291APT | Quick Change/Straight (APT Style) |
| CHR-SPRING | Lock Spring - Fits All Styles |



Quick Change Retainer

Solid Retainer



Lock Spring

SWIVELS & OILERS

| Part Number | Description |
|--------------------|--|
| HS-782412 | 7/8" -24 UNC x 1/2" Hose Barb |
| HS-3812 | 3/8" NPT x 1/2" Hose Barb |
| HS-1212 | 1/2" NPT x 1/2" Hose Barb |
| WHA-6CH | 6' whip hose assembly with HS-782412 swivel, coupling and ILO-S in line oiler. |



Whip Hose Assembly

Air Inlet Hose Swivel

| Item | ILO-S | ILO-M | ILO-L |
|-----------------------|-----------------|--------------|--------------|
| Oil Capacity | 1.4 oz | 3.7 oz | 11 oz |
| Pipe Size | 1/2" | 3/4" | 3/4" |
| Max. Working Pressure | 500 psi | 260 psi | 300 psi |
| Dimensions | 4-1/2" x 2-1/4" | 6" x 2-3/4" | 7" x 3-1/2" |
| Weight | .875 lbs | 1.5 lbs | 2 lbs |



In-Line Oiler

RIVET BUSTER RETAINERS

| Part Number | Description |
|--------------------|--------------------|
| RBP-RB2104 | Rubber Bumper |
| RBP-UB2102 | Urethane Bumper |
| RBP-US2101 | Upper Sleeve |
| RBP-LS2103 | Lower Sleeve |
| RBP-LS2103S | Split Lower Sleeve |
| RBP-RS2194 | Retainer Spring |



Rubber Bumper



Upper Sleeve



Lower Sleeve



Retainer



Split Lower Sleeve



Lock Spring

ADDITIONAL

RIVET BUSTER RETAINERS

| Part Number | Fits Tool | Fits Tool |
|--------------------|----------------------|------------------|
| RBR-21902557 | CP-4181 | 2.557" |
| RBR-21902565 | JET RB11 | 2.565" |
| RBR-21902400 | JET RB90, RB91 | 2.400" |
| RBR-21902445 | CP-60, 80, 90 | 2.445" |
| RBR-1851 | APT133/MP1133 | 2.610" |
| RBR-9001200 | IR9001 | Threaded |
| RBC-9RB-207 | Clip for RBR-9001200 | |

RUBBER RAMMER BUTTS

| Tool Model No. | Assembly No. | Size |
|------------------------|---------------------|-------------|
| AT-BR-00 | BRB-201S | 1-3/4" |
| | BRB-202S | 2-1/2" |
| | BRB-203S | 3-1/4" |
| AT-BR-2BA AT-BR-1BA | BRB-201-802 | 1-3/4" |
| | BRB-202-802 | 2-1/2" |
| | BRB-203-802 | 3-1/4" |

| Part No. | Description |
|-----------------|-------------------------|
| 2BA-TX00202 | Steel Butt W/ Bolt Hole |
| 2BA-TX00203 | Socket Screw |



BRB-201S



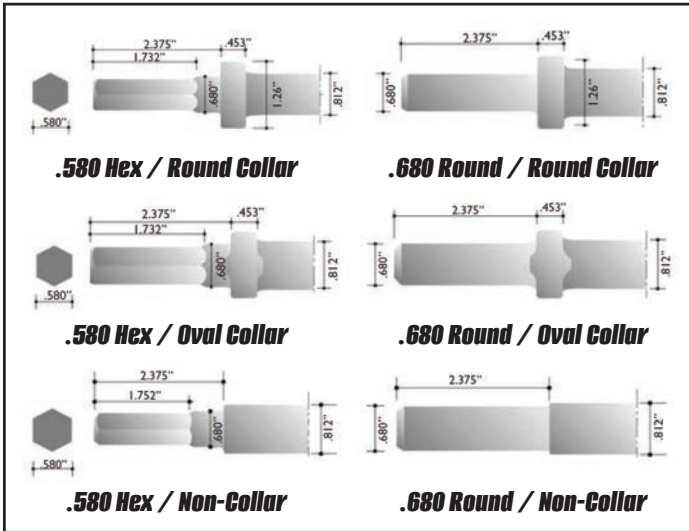
BRB-202S



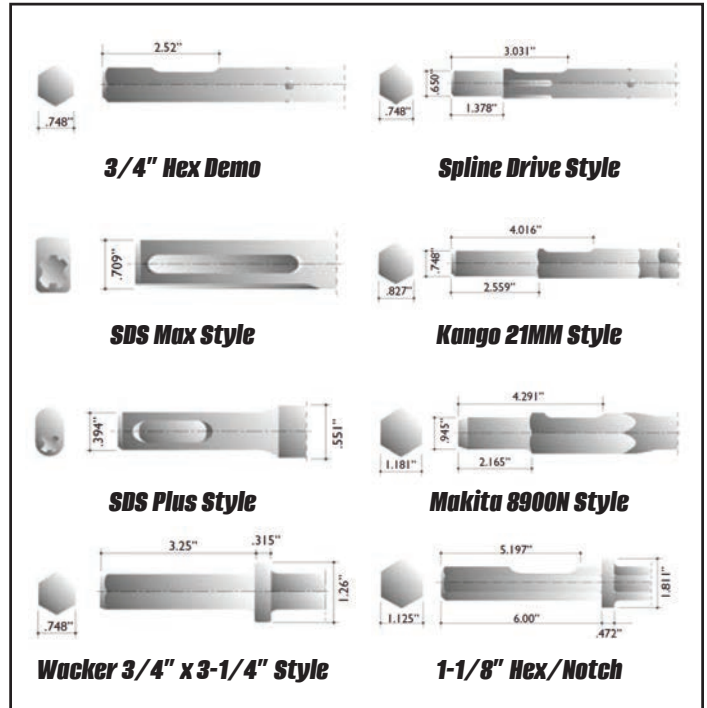
BRB-203S

SHANK REFERENCE

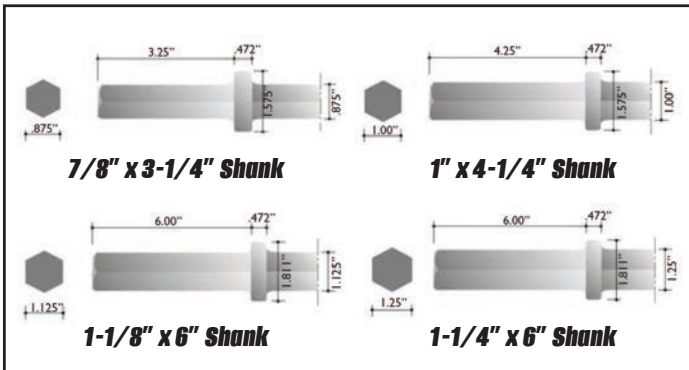
PNEUMATIC CHIPPER STEEL



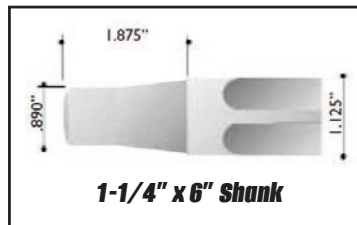
ELECTRIC CHIPPER STEEL



PAVEMENT BREAKER STEEL

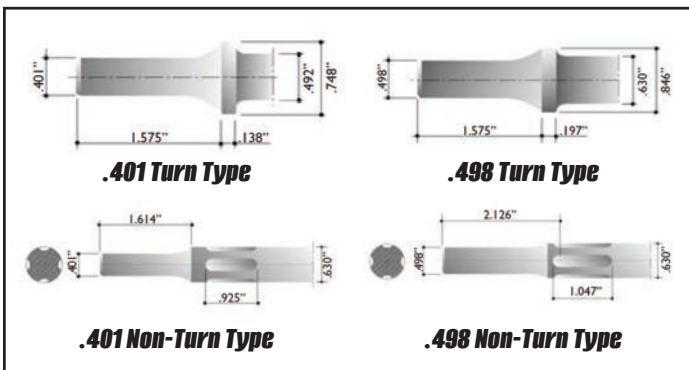


RIVET BUSTER



Additional Electric Shanks:
Hilti 805/905 Style
Makita HK1810 Style
Edco .580" Hex Style
Edco 7/8" Hex Style

PNEUMATIC ZIP GUN BITS



WELD FLUX SCALING BITS

